

STANLEY
Security Solutions



Decorative Lever Designs



Lever designs are available in the following series:

● Exit Device ■ Mortise ▲ Cylindrical 🖐️ Handed



3 & C ● ■



4 & K ● ■ ▲



12 ● ■



14 & D ● ■ ▲



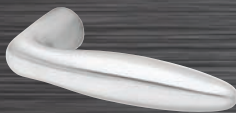
15 & A ● ■ ▲



16 & B ● ■ ▲



17 ● ■ 🖐️



50 ■



51 ● ■



52 ● ■ 🖐️



53 ■



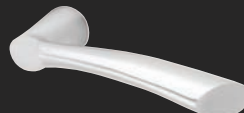
54 ● ■



55 ■



60 ■ 🖐️



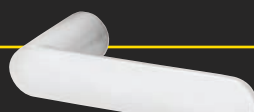
61 ■ 🖐️



62 ■



63 ■



64 ■



65 ● ■ 🖐️



66 ● ■ 🖐️



67 ■



68 ● ■ 🖐️



69 ● ■ 🖐️



70 ● ■ 🖐️



71 ■ 🖐️



72 ■



73 ■ 🖐️



74 ■ 🖐️



75 ■



76 ■



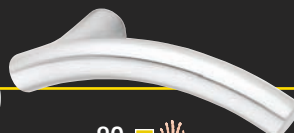
77 ■ 🖐️



78 ■ 🖐️



79 ■



80 ■ 🖐️



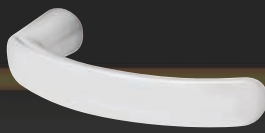
81 ■



82 ■



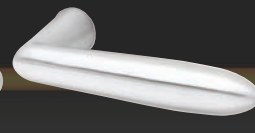
83 ■ 🖐️



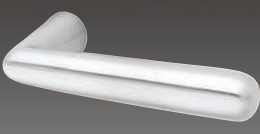
84 ■



85 ■



86 ■



87 ■



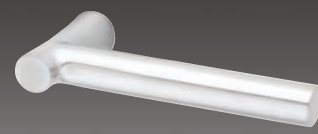
88 ■ 🖐️



89 ■



90 ■ 🖐️



91 ● ■

As the premier supplier of quality door hardware, Stanley Security Solutions (Stanley) has established a solid reputation providing comprehensive solutions for a variety of architectural hardware applications. Building on that reputation and through close collaboration with industry professionals, Stanley is proud to offer an expanded array of decorative levers for BEST™ locksets and Precision Hardware Apex 2000 Series exit devices in wide and narrow stiles.

Each decorative lever incorporates a unique design developed to suit a growing market demand for elegance and sophistication on high-end, non-residential applications such as hotels, resorts, office buildings, museums, and convention centers among others. The decorative levers comply with ADA (Americans with Disabilities Act), and are available in a variety of architectural finishes including Stanley's antimicrobial UltraShield™ coating for 626 and 630 finishes. Equally important, each decorative lever has undergone rigorous testing exceeding industry standards for function and finish durability to ensure your complete satisfaction.

STANLEY
Security Solutions



ADA-Americans With Disabilities Act:

The design and operation of the mortise lock meets the intent of the standard for ANSI A117.1 section 404.2.6.

Builders Hardware Manufacturers Association:

ANSI A156.13, Series 1000, Grade 1 Operational, Strength, and Security. To meet Grade 1 Security, drill resistant cores (1CD, 1CDP, 1CDF, and 1CDX) must be used with escutcheon trims, and 1E7K4 high security cylinder must be used with sectional trims (H, R, and S).

Underwriters Laboratories®

The 40H series is listed by Underwriters Laboratories for use on a 3 hour A label doors. These locks also carry the C-UL mark which is officially accepted in all of Canada, indicating compliance with appropriate Canadian standards and codes.

UltraShield™

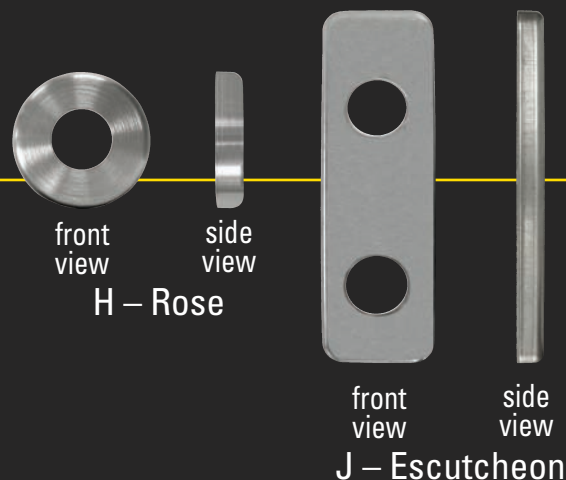
The UltraShield protection is limited to the product's surface and is not meant to be a substitute for good hygiene. Stanley recommends instituting and maintaining a thorough cleaning regimen of all your door hardware.



Mortise – standard levers/knob



H-Rose / J Escutcheon



Mortise Specifications:

Lever handle:

Standard designs – Brass, bronze, or stainless steel base material.
Decorative designs – Stainless steel base material with applied finish.

Roses:

Wrought brass, bronze, or stainless steel base material.
H – Flat w/ round edge, 2 3/4" dia.
R – Contoured w/ round edge, 2 3/4" diameter.
S – Flat w/ beveled edge, 3 1/2" dia.

Escutcheons:

J – Wrought brass, bronze, or stainless steel base material, 7 1/2" H x 2 9/32" W x 17/32" T.
M & N – Forged brass, bronze, or stainless steel, 8" H x 2 1/8" W x 11/64" T, through-bolt mounted (no exposed screws outside).
M – Standard cylinder; N – Concealed cylinder.

Finishes*:

605, 606, 611, 612, 613, 625, 626, 626AM**, 629, 630, 630AM**, 690

* Decorative lever designs use stainless steel base material with an applied finish.

** 626AM – Satin Chrome Plated with UltraShield™ Antimicrobial coating

*** 630AM – Satin Stainless Steel with UltraShield™ Antimicrobial coating

Note: All lever height dimensions from the door face are based on rose escutcheons. When "J" escutcheons are used, height increases by 1/32".

Note: For more detail information on finishes refer to page 14.

Mortise – Rose styles



H- rose
mortise



R- rose
mortise



S- rose
mortise

Lever designs are available in the following series:

● Exit Device ■ Mortise ▲ Cylindrical ✋ Handed

STANLEY

Security Solutions

Exit trim – Escutcheons

Mortise trim – Escutcheons



Standard
escutcheon
exit device



Narrow
escutcheon
exit device



J
escutcheon
mortise



M
escutcheon
mortise



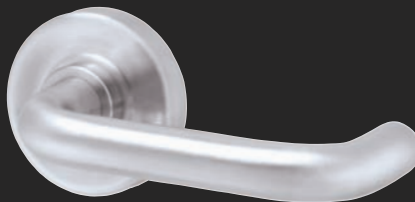
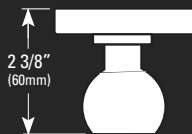
N
escutcheon
mortise

Note: For all lever heights from door face the "H" rose dimensions were used. For "J" escutcheons add 3/64".

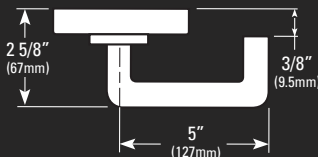
Mortise – standard levers/knob



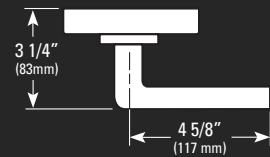
knob - 4 ● ■ ▲
rose - H



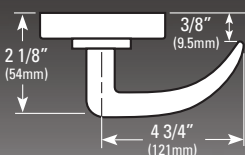
lever - 3 ● ■
rose - R



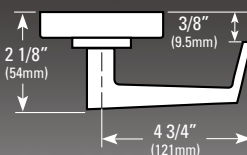
lever - 12 ■
rose - S



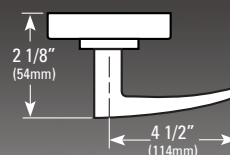
lever - 14 ● ■ ▲
rose - H



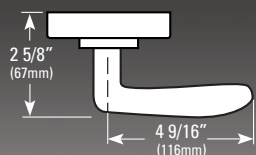
lever - 15 ● ■ ▲
rose - H



lever - 16 ● ■ ▲
rose - H



lever - 17 ■ ✋
rose - H



Lever designs are available in the following series:

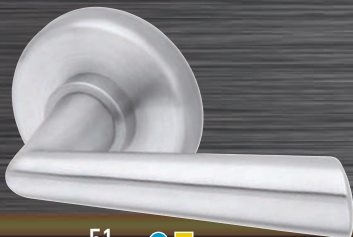
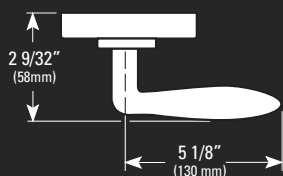
● Exit Device ■ Mortise ▲ Cylindrical 🖐️ Handed

Mortise – decorative levers

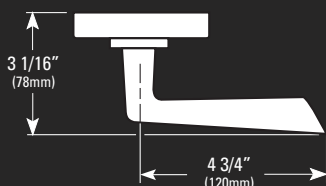
Note: For all lever heights from door face the “H” rose dimensions were used. For “J” escutcheons add 3/64”.



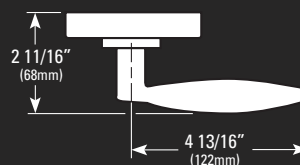
50 ■



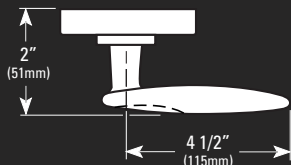
51 ● ■



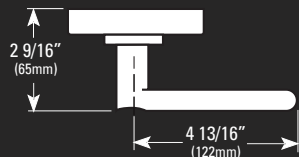
52 ● ■ 🖐️



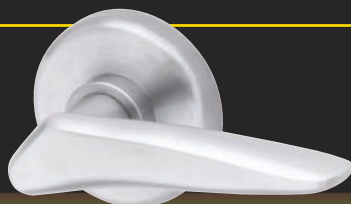
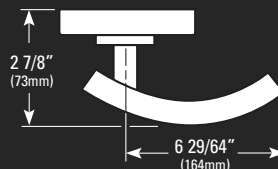
53 ■



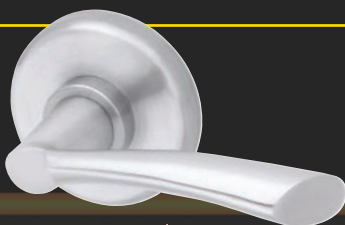
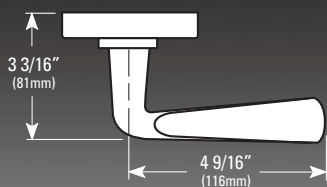
54 ● ■



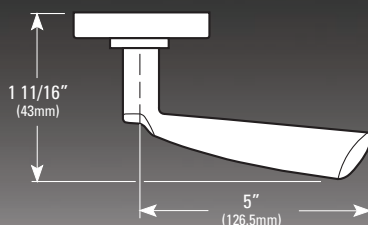
55 ■



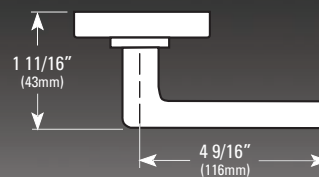
60 ■ 🖐️



61 ■ 🖐️



62 ■



Lever designs are available in the following series:

● Exit Device ■ Mortise ▲ Cylindrical ✎ Handed

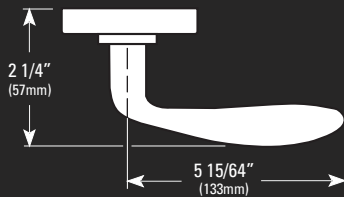
STANLEY
Security Solutions

Note: For all lever heights from door face the "H" rose dimensions were used. For "J" escutcheons add 3/64".

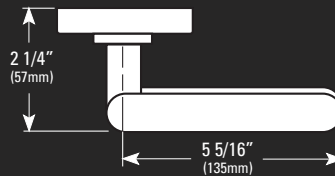
Mortise – decorative levers (continued)



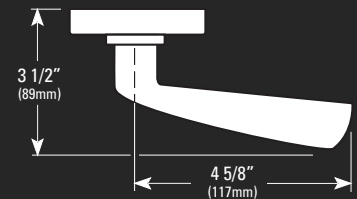
63 ■



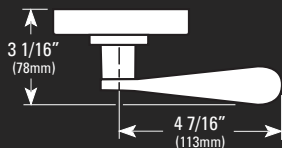
64 ■



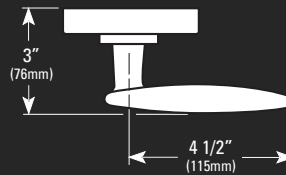
65 ● ■ ✎



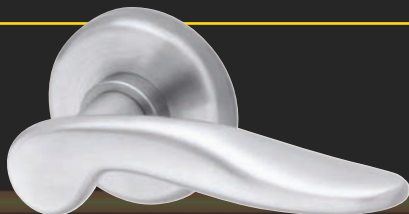
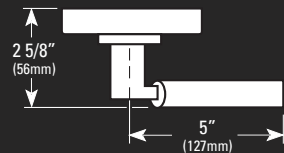
66 ● ■ ✎



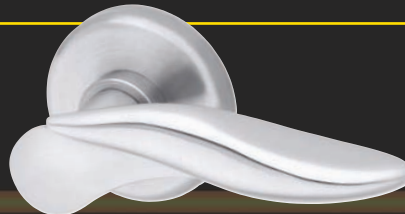
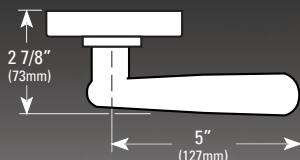
67 ■



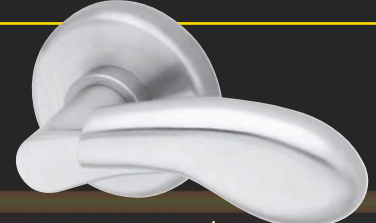
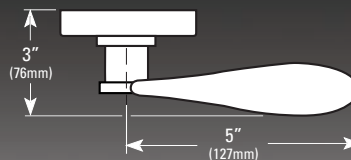
68 ● ■ ✎



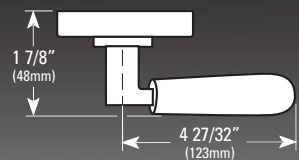
69 ● ■ ✎



70 ● ■ ✎



71 ■ ✎

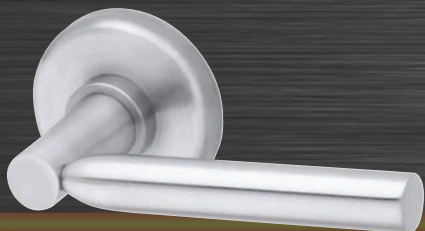


Lever designs are available in the following series:

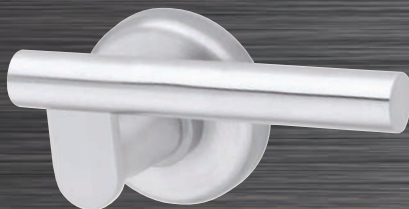
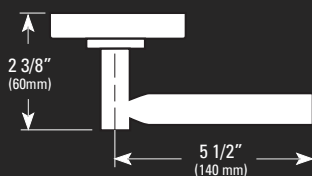
● Exit Device ■ Mortise ▲ Cylindrical ✎ Handed

Mortise – decorative levers (continued)

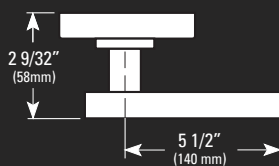
Note: For all lever heights from door face the “H” rose dimensions were used. For “J” escutcheons add 3/64”.



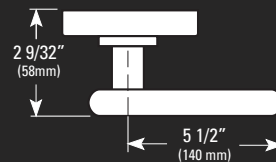
72 ■



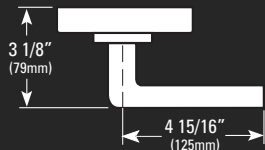
73 ■ ✎



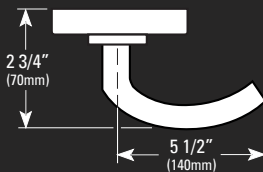
74 ■ ✎



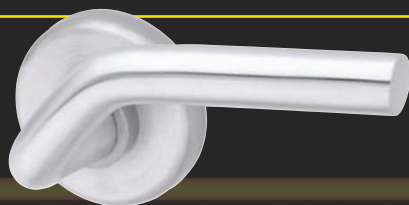
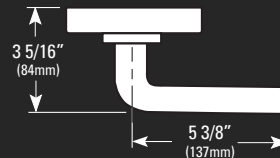
75 ■



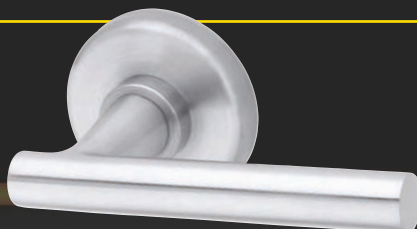
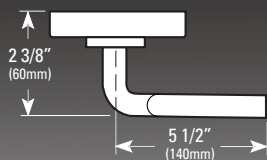
76 ■



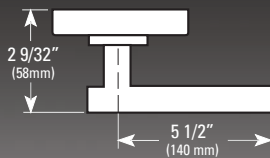
77 ■ ✎



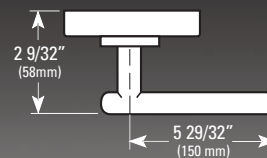
78 ■ ✎



79 ■



80 ■ ✎



Lever designs are available in the following series:

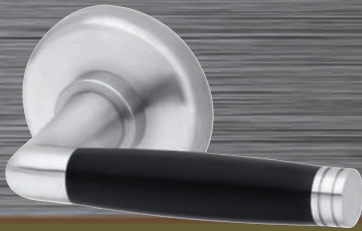
● Exit Device ■ Mortise ▲ Cylindrical ✎ Handed

STANLEY

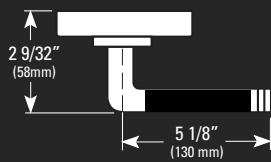
Security Solutions

Note: For all lever heights from door face the "H" rose dimensions were used. For "J" escutcheons add 3/64".

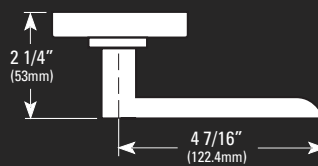
Mortise – decorative levers (continued)



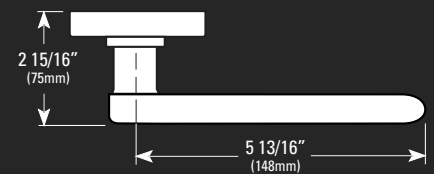
81 ■



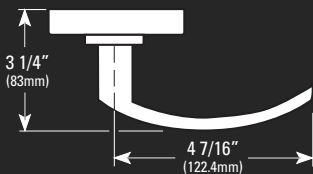
82 ■



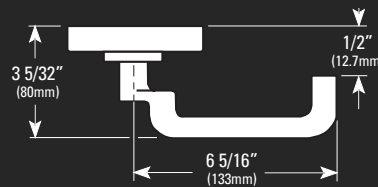
83 ■ ✎



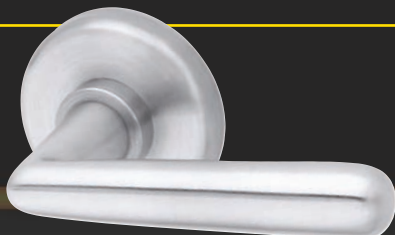
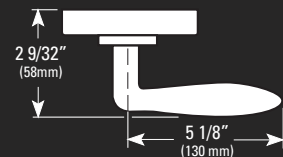
84 ■



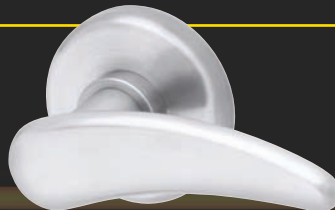
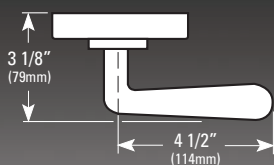
85 ■



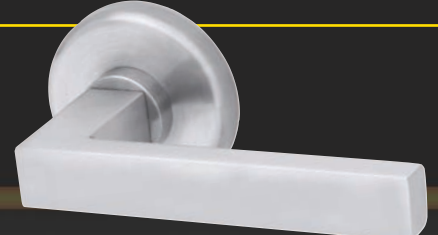
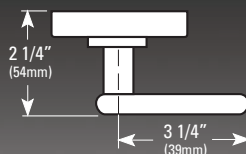
86 ■



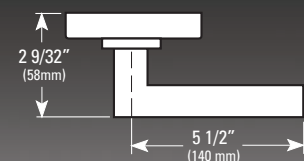
87 ■



88 ■ ✎



89 ■



Lever designs are available in the following series:

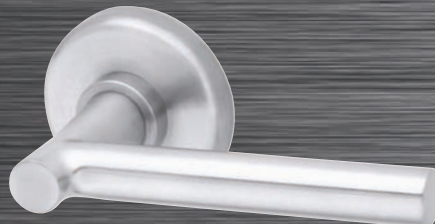
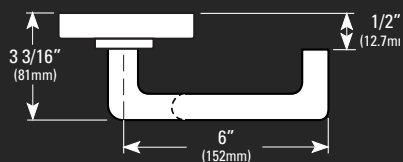
● Exit Device ■ Mortise ▲ Cylindrical ✎ Handed

Mortise – decorative levers (continued)

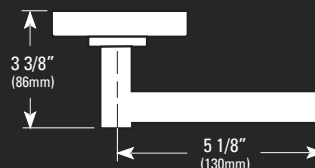
Note: For all lever heights from door face the “H” rose dimensions were used. For “J” escutcheons add 3/64”.



90 ■ ✎



91 ● ■



Exit Device – standard levers/knob



Exit Device Specifications:

Lever handle:

Standard designs – Brass, bronze, or stainless steel base material.

Decorative designs – Stainless steel base material with applied finish.

- Specify lever/knob design (A,B,C,D,K) and handing (“A” Lever RHRB furnished standard).

Finishes*:

605, 606, 612, 613, 625, 626, 626AM**

* Decorative lever designs use stainless steel base material with an applied finish.

** 626AM – Satin Chrome Plated with UltraShield™ Antimicrobial coating

Note: If 630/630AM finish is ordered 626/626Am will be supplied.

Note: For more detail information on finishes refer to page 14.

Lever designs are available in the following series:

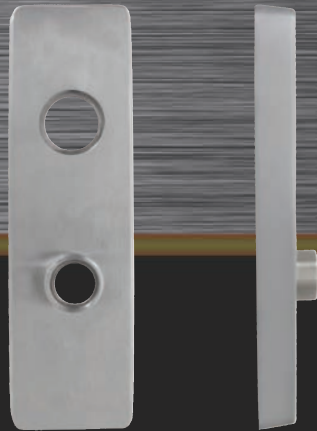
● Exit Device ■ Mortise ▲ Cylindrical ✎ Handed

STANLEY®

Security Solutions

4900/2900 Escutcheons

4900 Standard



front view

side view

2900 Narrow



front view

side view

Note: For all lever heights from door face the 4900 escutcheon dimensions were used. For 2900 escutcheons subtract 5/8".

Exit Device – standard levers/knob



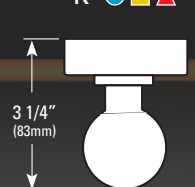
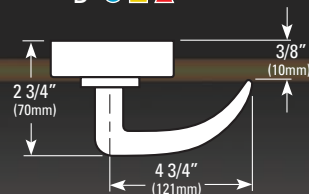
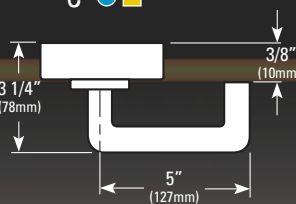
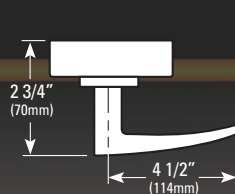
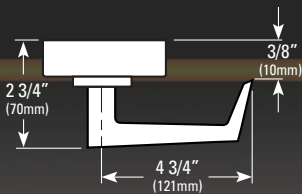
A ● ■ ▲

B ● ■ ▲

C ● ■

D ● ■ ▲

K ● ■ ▲



Lever designs are available in the following series:

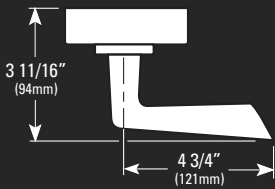
● Exit Device ■ Mortise ▲ Cylindrical ✎ Handed

Exit Device – decorative levers

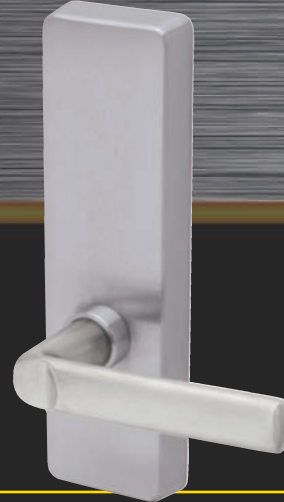
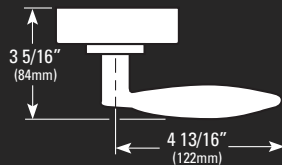
Note: For all lever heights from door face the 4900 escutcheon dimensions were used. For 2900 escutcheons subtract 5/8".



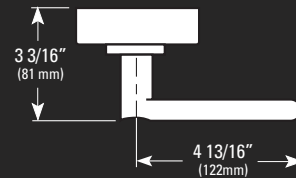
51 ● ■



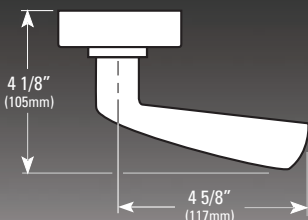
52 ● ■ ✎



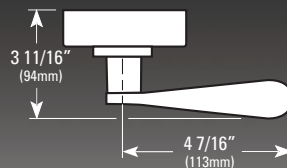
54 ● ■ ✎



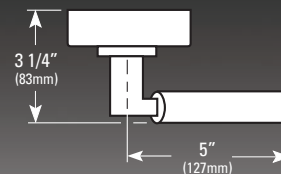
65 ● ■ ✎



66 ● ■ ✎



68 ● ■ ✎



Note: All dimensions are based on 4900 trim escutcheons. For 2900 trims subtract 5/8".

Lever designs are available in the following series:

● Exit Device ■ Mortise ▲ Cylindrical ✎ Handed

STANLEY

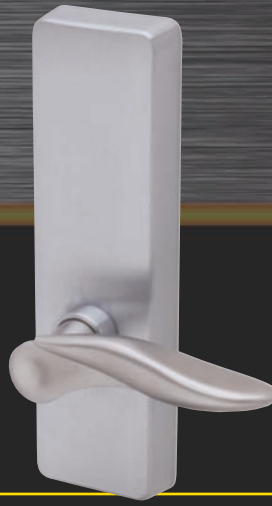
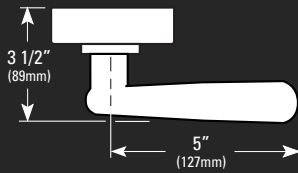
Security Solutions

Note: For all lever heights from door face the 4900 escutcheon dimensions were used. For 2900 escutcheons subtract 5/8".

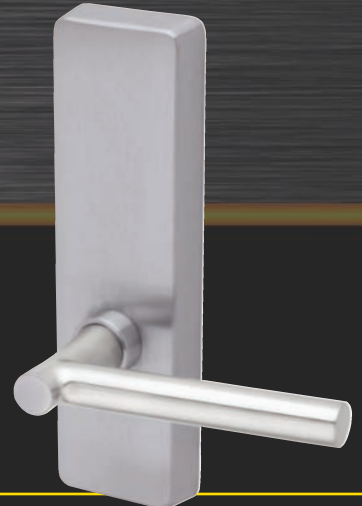
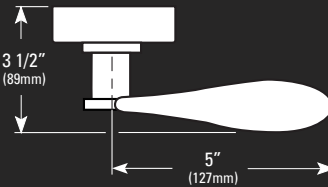
Exit Device – decorative levers (continued)



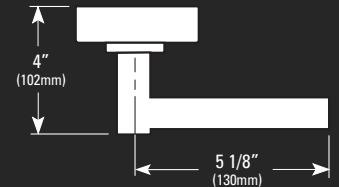
69 ● ■ ✎



70 ● ■ ✎



91 ● ■ ✎



Finishes

Finishes add beauty as well as durability to finish hardware. For that reason Stanley Security Solutions (Stanley) offers a variety of finishes to suit the most popular tastes and the most grueling environments. When choosing finishes keep the following factors in mind:

- Interior elements such as cleaners, chlorine, or solvents
- Exterior elements such as direct sunlight, salt spray, or rain
- Frequency of use
- Harshness of use
- Aesthetic needs

■ Mortise
● Exit Device



605 ■ ●



606 ■ ●



611 ■



612 ■ ●



613 ■ ●



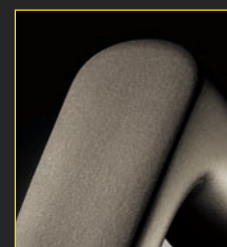
625 ■ ●



626 ■ ●



630 ■



690 ■



626AM ■

BHMA	Fed. Spec.	Description
605	US3	Bright Brass, Clear Coated
606	US4	Satin Brass, Clear Coated
611	US9	Bright Bronze, Clear Coated
612	US10	Satin Bronze, Clear Coated
613	US10B	Oxidized Satin Bronze, Oil Rubbed
618	US14	Polished Nickel Plated
619	US15	Satin Nickel Plated
622	US19	Flat Black
625	US26	Bright Chromium Plated
626	US26D	Satin Chromium Plated
627	US27	Satin Aluminum, Clear Coated
628	US28	Satin Aluminum, Clear Anodized
629	US32	Bright Stainless Steel
630	US32D	Satin Stainless Steel
690	US20	Dark Bronze, Powder Coated
626AM	—	Satin Chromium Plated with UltraShield™ antimicrobial coating
630AM	—	Satin Stainless Steel with UltraShield™ antimicrobial coating



630AM ■ ●

How to Order – Mortise trims

Series	Core Housing	Function	Lever/Knob	Trim	Handing	Finishes
45H – std. lock 47H – high security	7 – 7 pin housing accepts all BEST cores	A – office D – office L – privacy N – classroom etc.	Standard levers – 3, 12, 14, 15, 16, 17 Standard knob – 4 Decorative levers: i.e., 51	45H H, R, S, J, M, N 47H H, R, S, M	RH LH RHRB LHRB	605 626 606 626AM 611 629 612 630 613 630AM 625 690

How to Order – Exit Device trims

Trim Series	Trim Functions	Lever/knob	Handing	Finishes
2900 – Narrow style 4900 – Wide style	02 – dummy trim 03 – key retracts latchbolt 08 – key locks/unlocks lever 14 – No cylinder, lever always active	Standard levers – A, B, C, D Standard knob – K Decorative levers: i.e., P51	RHRB LHRB	605 606 612 613 625 626 626AM





Stanley Security Solutions offers the world's most comprehensive line of services, industry-leading products and cutting-edge technologies. With a powerful portfolio of top security brands and services specialized to meet customer needs, we deliver complete, customized solutions to any size facility. Our integrated team of 13,000 global employees, over 225 sales and service offices and more than 1,000 mobile technicians, provide an unparalleled level of system support and customer service. Our experts stand ready to respond to your needs 24 hours a day, 7 days a week.



6161 East 75th Street | Indianapolis, In 46250
©2011 Stanley Security Solutions, Inc. • www.stanleysecuritysolutions.com

B-366 02/11