

## SIDE ADJUST TANDEM ROLLERS

### Product Comparison Chart

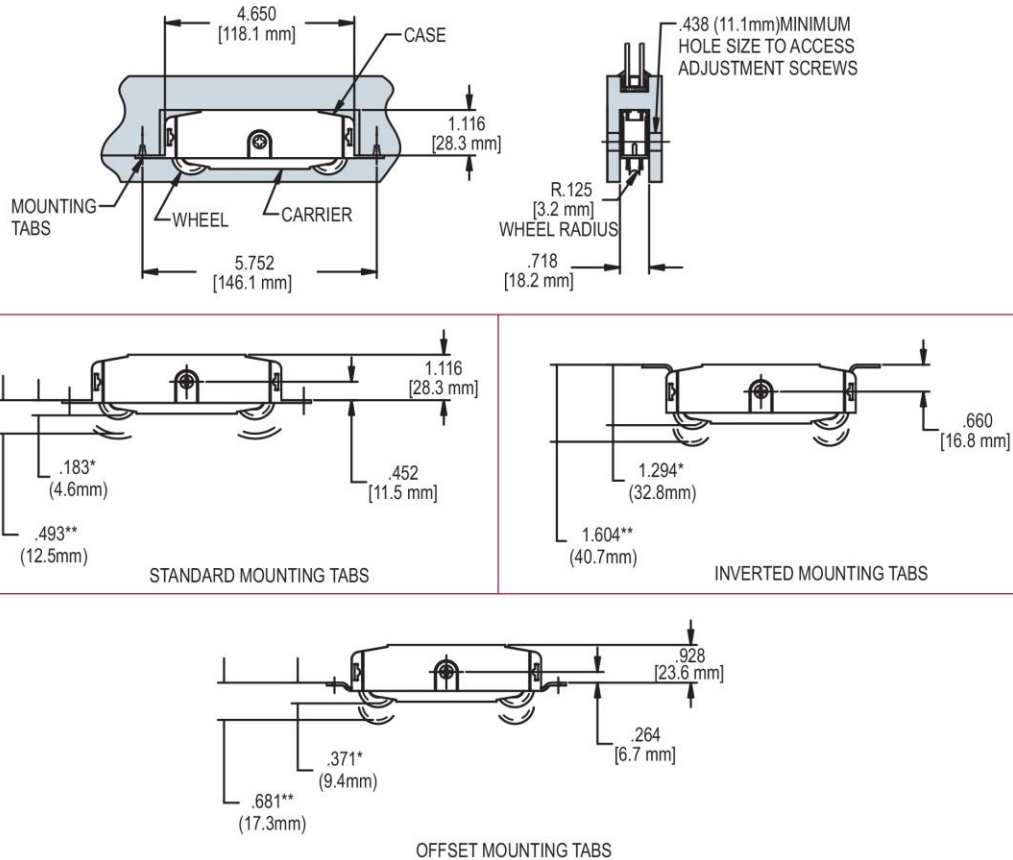
Roller Assembly No.	Roller Dia.	AAMA Certified**	Max. Door Wt. *	Ease Of Adjustment	See Figure Number
39.10	1.25 (31.8 mm)	Yes	400 (182 Kg.)	Best	1
39.11	1.25 (31.8 mm)	Yes	250 (114 Kg.)	Best	1
39.13	1.25 (31.8 mm)	Yes	400 (182 Kg.)	Best	1
39.14	1.25 (31.8 mm)	Yes	400 (182 Kg.)	Best	1
39.20	1.25 (31.8 mm)	Yes	400 (182 Kg.)	Best	1
39.22	1.25 (31.8 mm)	Yes	250 (114 Kg.)	Best	1
39.23	1.25 (31.8 mm)	Yes	250 (114 Kg.)	Best	1
39.24	1.25 (31.8 mm)	Yes	400 (182 Kg.)	Best	1
38.10.00.052	1.50 (38.1 mm)	Yes	450 (205 Kg.)	Better	3
38.10.00.051	1.50 (38.1 mm)	Yes	450 (205 Kg.)	Better	3
38.10.00.002	1.50 (38.1 mm)	Yes	450 (205 Kg.)	Better	3
38.10.00.001	1.50 (38.1 mm)	Yes	450 (205 Kg.)	Better	3
SD659	1.25 (31.8 mm)	Yes	150 (68 Kg.)	Better	4
ND659	1.25 (31.8 mm)	No	150 (68 Kg.)	Better	4
1973-9100-25	1.25 (31.8 mm)	Yes	500 (227 Kg.)	Good	2
1973-8000-25	1.50 (38.1 mm)	No	500 (227 Kg.)	Good	2
1973-4000-25	1.25 (31.8 mm)	No	500 (227 Kg.)	Good	2

\* Two roller assemblies per door

\*\* Our AAMA certifications are being updated constantly. Please consult AAMA's Verified Components List for an up to date listing of certified patio door roller products.

## SIDE ADJUST TANDEM ROLLERS

FIG. 1 APPLICATION OF 39 SERIES PATIO DOOR ROLLER



\*FULLY RETRACTED WHEEL POSITION-DIMENSION IS TO INSIDE WHEEL RADIUS

\*\*FULLY EXTENDED WHEEL POSITION-DIMENSION IS TO INSIDE WHEEL RADIUS

PART NO.	CASE AND CARRIER MATERIAL	WHEEL MATERIAL	MOUNTING TABS	SPECIAL FEATURES
39.10	STEEL	STEEL	STANDARD	
39.11	STEEL	NYLON	STANDARD	
39.13	STAINLESS STEEL	STAINLESS STEEL	STANDARD	SST MOUNTING TABS
39.14	STEEL	STEEL	INVERTED	
39.20	STEEL	STAINLESS STEEL	STANDARD	
39.22	STEEL	NYLON	INVERTED	
39.23	STEEL	NYLON	OFFSET	
39.24	STEEL	STEEL	OFFSET	

**NOTE:**

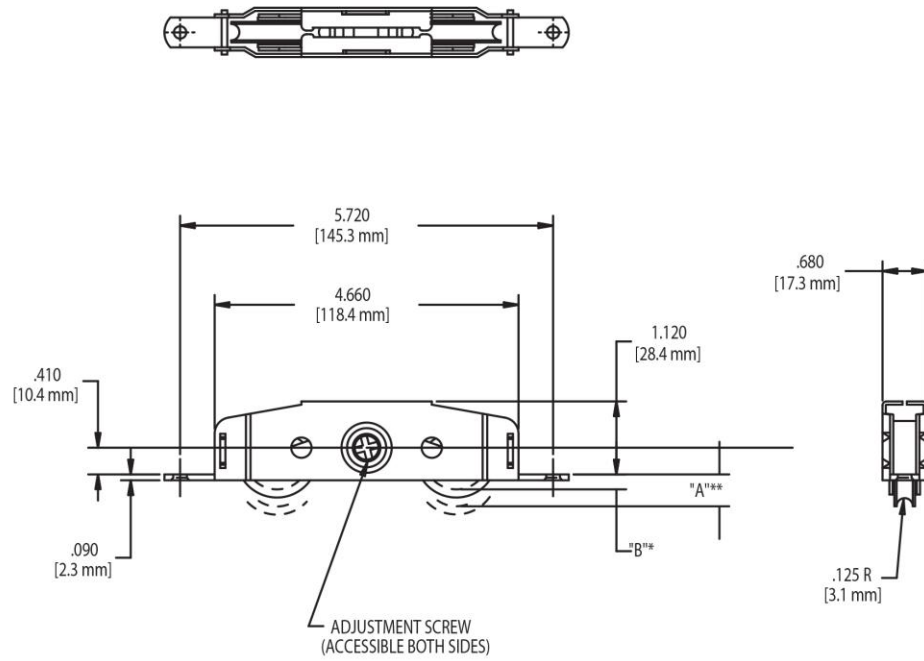
TRUTH PATIO DOOR ROLLERS ARE ADJUSTABLE FROM BOTH SIDES. WHEN TURNED COUNTER-CLOCKWISE, THE SIDE WITH CROSSED SLOTS RAISES THE DOOR. WHEN TURNED CLOCKWISE, THE SIDE WITH THE SINGLE SLOT RAISES THE DOOR.

**RECOMMENDED SCREWS:**

(QTY 2)#8 PHILLIPS, FLAT HEAD SCREWS (LENGTH AND THREAD TYPE TO BE DETERMINED BY PROFILE)

## SIDE ADJUST TANDEM ROLLERS

FIG. 2 1973 SERIES SIDE ADJUST TANDEM ROLLER



\*FULLY RETRACTED WHEEL POSITION-DIMENSION IS TO INSIDE WHEEL RADIUS

\*\*FULLY EXTENDED WHEEL POSITION-DIMENSION IS TO INSIDE WHEEL RADIUS

PART NO.	MATERIAL	WHEEL DIAMETER	"A"*** FULLY EXTENDED	"B"*** FULLY RETRACTED
1973-9100-25	STAINLESS STEEL	1.250	.489	.230
1973-4000-25	STEEL	1.250	.489	.230
1973-8000-25	STAINLESS STEEL	1.500	.614	.355

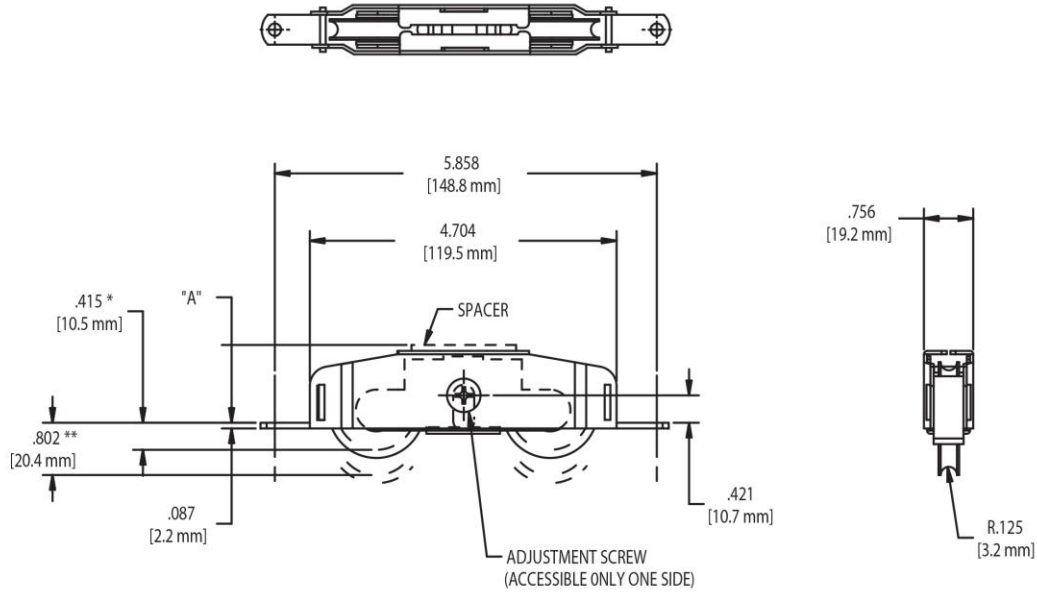
### NOTE:

THE 1973 SERIES PATIO DOOR ROLLERS ARE ADJUSTABLE FROM BOTH SIDES. THE SIDE WITH CROSSED SLOTS RAISES THE DOOR WHEN TURNED CLOCKWISE. THE SIDE WITH THE SINGLE SLOT RAISES THE DOOR WHEN TURNED COUNTER-CLOCKWISE

### RECOMMENDED MOUNTING SCREWS:

(QTY 2) #10 PHILLIPS FLAT HEAD SHEET METAL SCREW,  
(LENGTH TO BE DETERMINED BY APPLICATION)

**FIG. 3 38.10 SERIES TANDEM ROLLER**



\*FULLY RETRACTED WHEEL POSITION-DIMENSION IS TO INSIDE WHEEL RADIUS

\*\*FULLY EXTENDED WHEEL POSITION-DIMENSION IS TO INSIDE WHEEL RADIUS

PART NO.	MATERIAL	"A" HEIGHT	SPACER
38.10.00.001	STEEL	1.103	NO
38.10.00.002	STEEL	1.198	YES
38.10.00.051	STAINLESS STEEL	1.103	NO
38.10.00.052	STAINLESS STEEL	1.198	YES

**NOTE:**

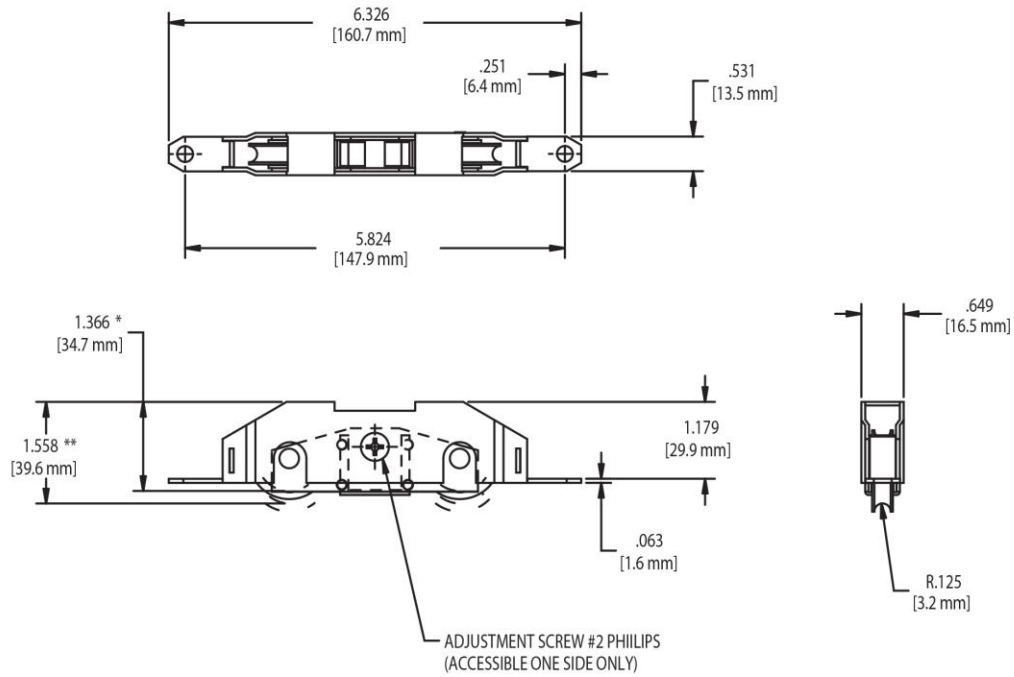
THE 38.10 SERIES PATIO DOOR ROLLERS ARE ADJUSTABLE FROM ONE SIDE ONLY.  
TO RAISE THE DOOR, TURN THE ADJUSTMENT SCREW CLOCKWISE.

**RECOMMENDED MOUNTING SCREWS:**

(QTY 2) #10 PHILLIPS FLAT HEAD SHEET METAL SCREWS,  
(LENGTH TO BE DETERMINED BY APPLICATION)

## SIDE ADJUST TANDEM ROLLERS

FIG. 4 659 SERIES ROLLER



\*FULLY RETRACTED WHEEL POSITION-DIMENSION IS TO INSIDE WHEEL RADIUS

\*\*FULLY EXTENDED WHEEL POSITION-DIMENSION IS TO INSIDE WHEEL RADIUS

PART NO.	MATERIAL
SD659	STEEL
ND659	NYLON

### RECOMMENDED MOUNTING SCREWS:

(QTY 2) #10 PHILLIPS FLAT HEAD SCREWS, (LENGTH AND  
THREAD TYPE TO BE DETERMINED BY APPLICATION)