



Truth's new patio door handle sets are distinctive choices that add a unique signature to your patio doors.

UNIQUE STYLING:

The Signature Series by Truth Hardware has a new contour shape which is both elegant in style and easy to grasp. Compatible with industry standard single or multi-point mortise locks, Truth's Signature Series are available with optional key lock cylinders and inactive configurations for OXXO doors.

All Truth Signature Series Handle sets have been engineered to fit stile thicknesses ranging from 1.25" to 2.25". The extended bosses on both the inside and outside escutcheons enhance the handle stability for more secure operation.

SIGNATURE SERIES

#40.94 - #40.97 MODELS:

The premier handle set in this new series is designed to accent today's larger patio doors. With a new contoured handle shape which is both elegant and easy to grasp, these models complement other Signature Series models to give you a "better/best" family look platform.

13" long and 1-1/4" wide escutcheons are available in 4 different style options to help you customize the look of your door.

The locking point on these models is located above the handle to provide easy access to the thumbturn or optional key cylinder. The stylized thumbturn incorporates a similar look to the escutcheon design offering a subtle connection between the two.

SIGNATURE SERIES

#40.90 - #40.93 MODELS:

Truth's #40.90 - #40.93 Signature Series models offer industry standard mounting hole spacing for easy conversion or as an upgrade to your current system. These Signature Series models may be combined with Truth's standard outside pulls for differentiated appearance and price points. The optional key lock cylinder can be offset to maximize accessibility of the handle.

10" long and 1" wide escutcheons adapt nicely to slimmer door profiles and are available in four different style



options. In addition, the locking lever actuator offers complementary styling to the handle's contour shape.

Truly better from every perspective, Truth's Signature Series Handle Sets have that elegant look and feel which will enhance any size patio door.

MATERIAL & FINISHES:

Available in all of Truth's plated decorative finishes on a solid brass base and in Truth's traditional decorative finishes over a zinc base. Paint finishes are electrostatically applied, durable coatings that provide excellent resistance to chipping, scratching and corrosion while maintaining color stability for years in direct sunlight. Please refer to Truth's Color Chart for examples of Truth's most popular finish options.

WARRANTY:

Protected under the terms of the Truth Warranty for Window and Door Manufacturers and Authorized Distributors. Refer to Truth's Terms & Conditions for further details.

ORDERING INFORMATION:

To customize the hardware package containing the specific items you require for your door system, please select from the following options:

1. Order item numbers 40.94 through 40.97 for Signature Series Handle Set with thumb turn above the handle (See Fig. 1 for style options). OR

Order item numbers 40.90 through 40.93 for Signature Series Handle Set with lever centered within the handle (See Fig. 4 for style options).

2. Specify finish

3. Select Mortise Lock item number (see 2-Point Mortise Lock or Handle Set Accessories Sections).

4. Select Keeper (See Handle Set Accessories Section – Keeper Options)

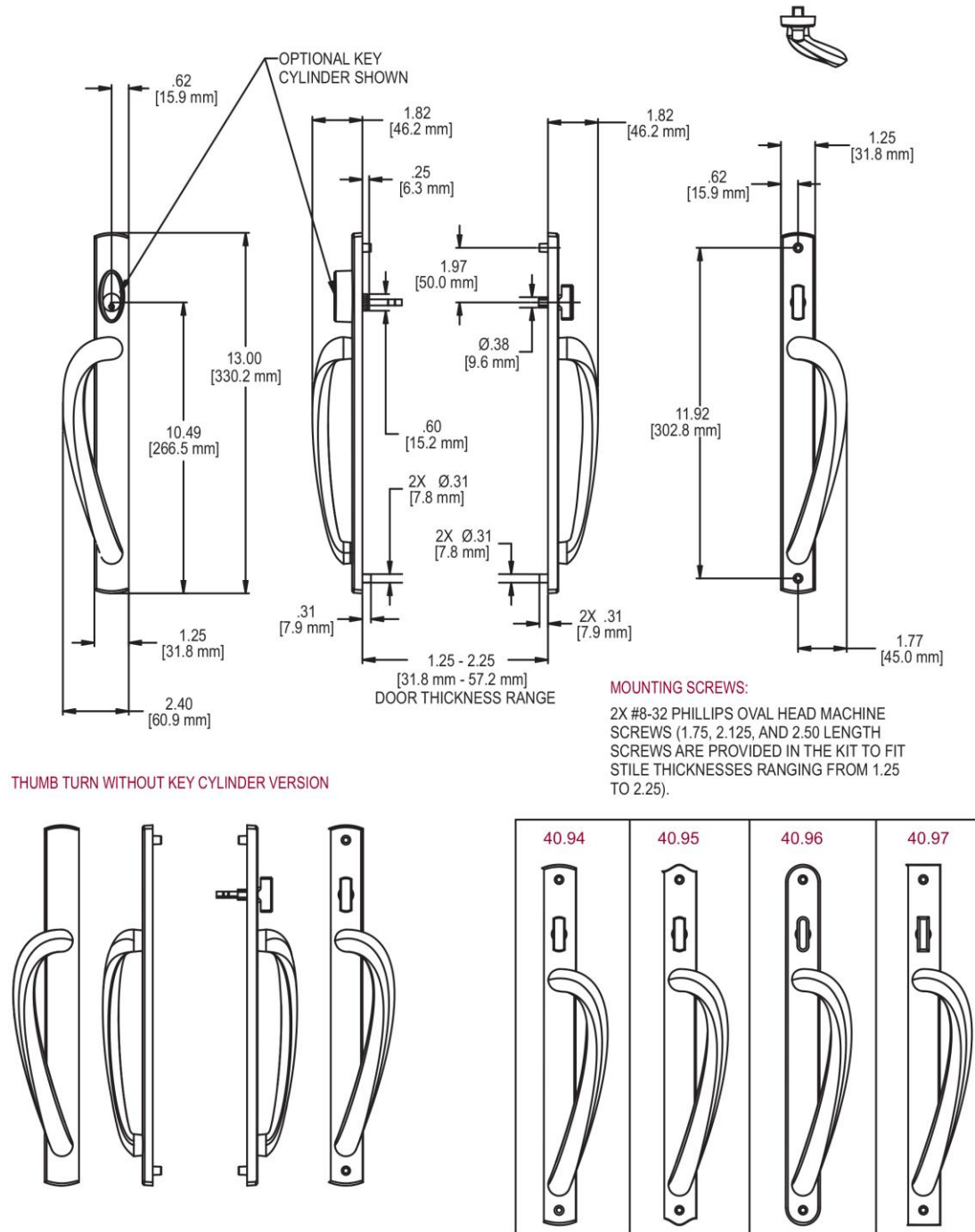
TRUTH TIPS:

1. A Truth Hardware Secondary Patio Door Lock or Limiter can be added for applications requiring additional security.

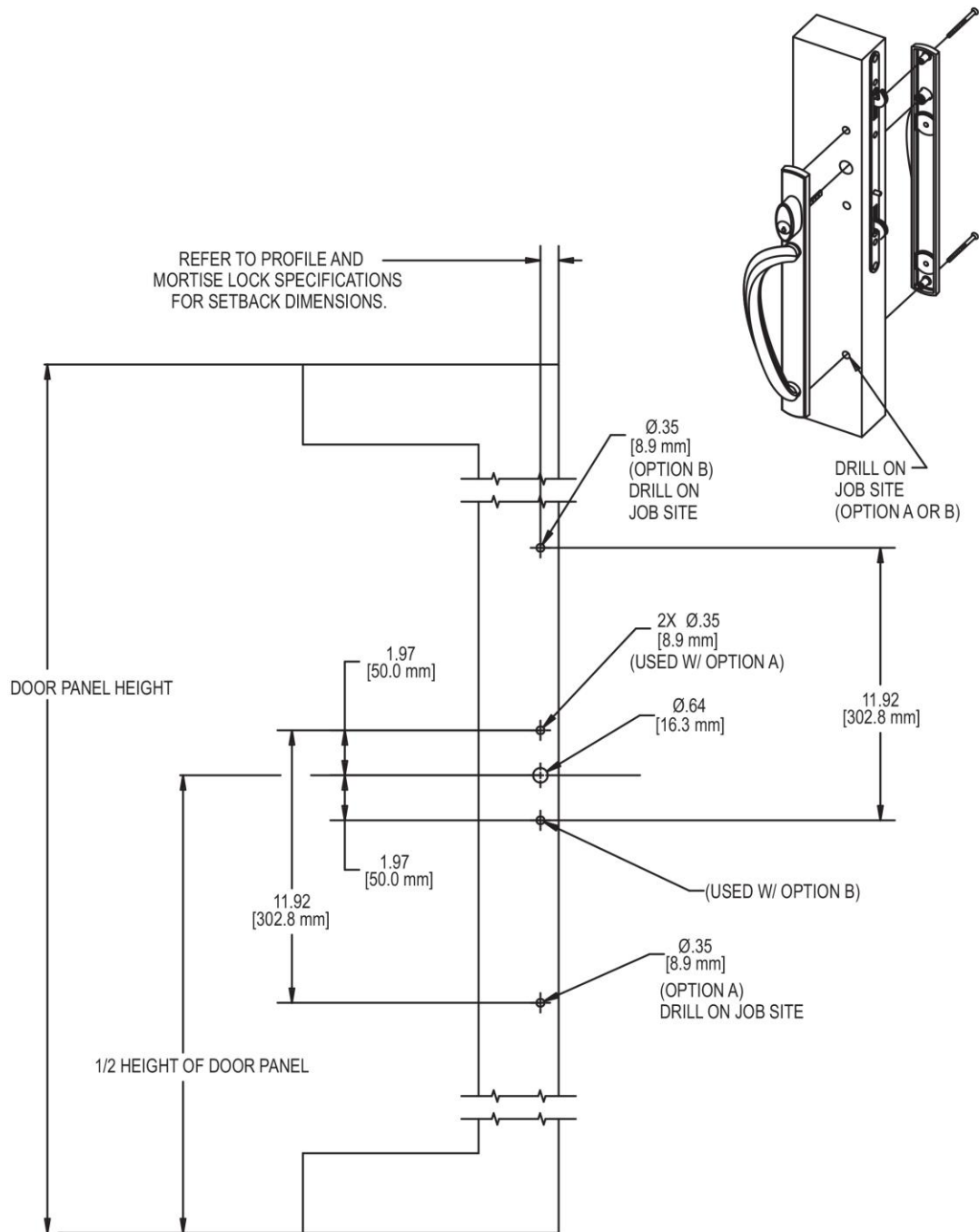
2. Bumper guards (Truth item number 22082.XX), to keep door sash from contacting the opposite jamb during its travel, are highly recommended (See Handle Set Accessories Section).

3. The use of frame adjusters (Jamb Jacks) is recommended for easy correction of out of square or racked door installations. Frame adjustment can improve both weather seal tightness and door operation over the life of the door.

FIG. 1 SIGNATURE SERIES PATIO DOOR HANDLE 40.94 THROUGH 40.97

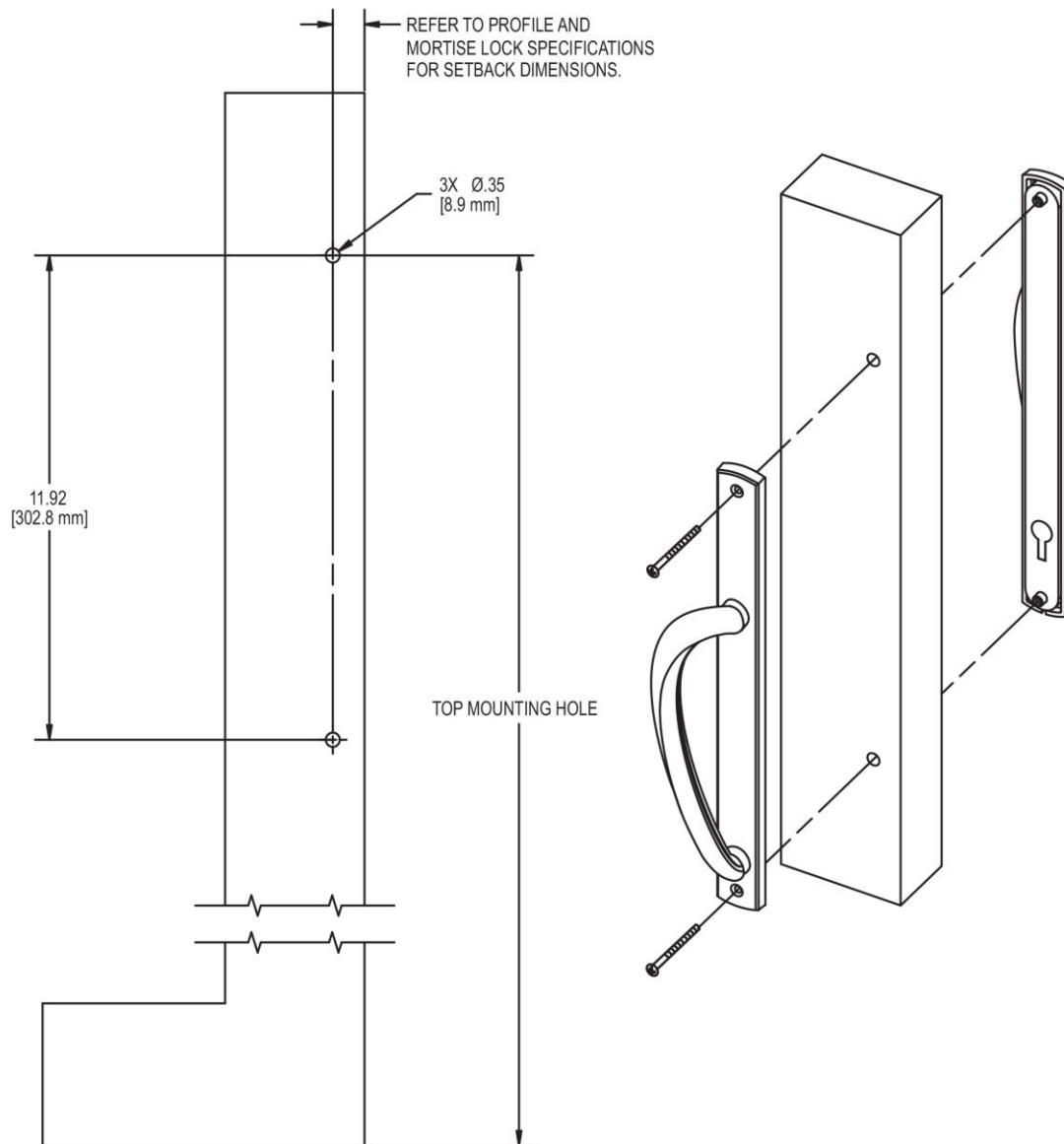


**FIG. 4 SIGNATURE SERIES PATIO DOOR HANDLE APPLICATION
(CARTWHEEL APPLICATION)**



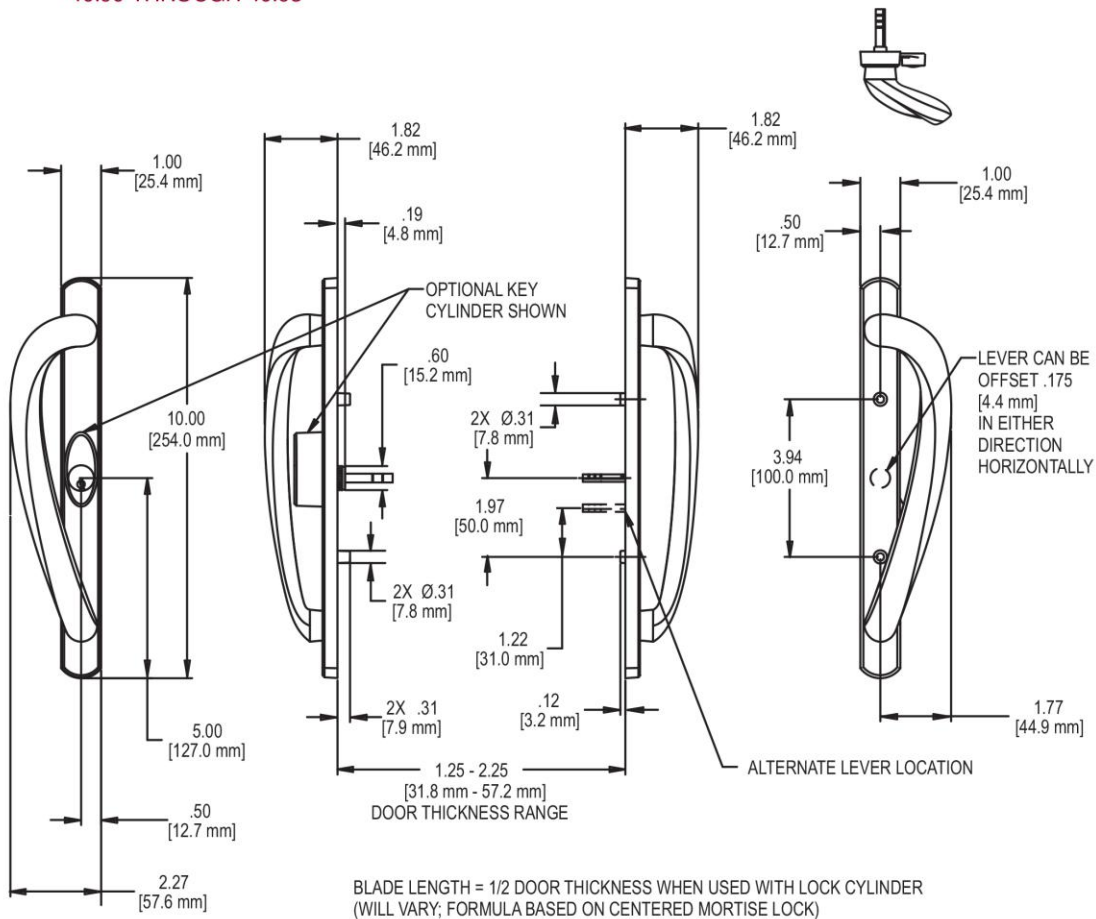
SIGNATURE SERIES PATIO DOOR HANDLE SETS

FIG. 5 SIGNATURE SERIES PATIO DOOR HANDLE APPLICATION
(DUMMY APPLICATION)



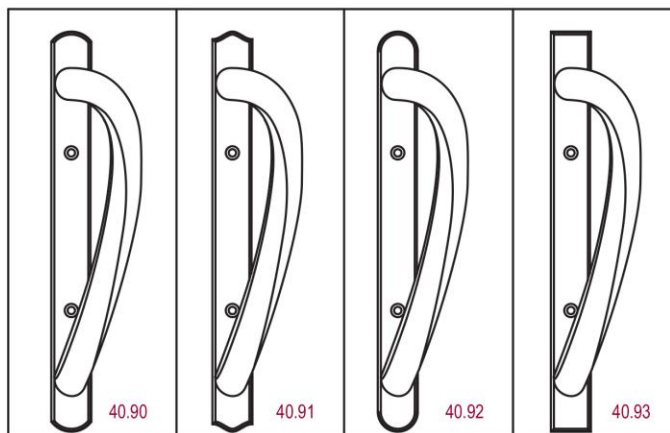
SIGNATURE SERIES PATIO DOOR HANDLE SETS

FIG. 6 SIGNATURE SERIES PATIO DOOR HANDLES
40.90 THROUGH 40.93



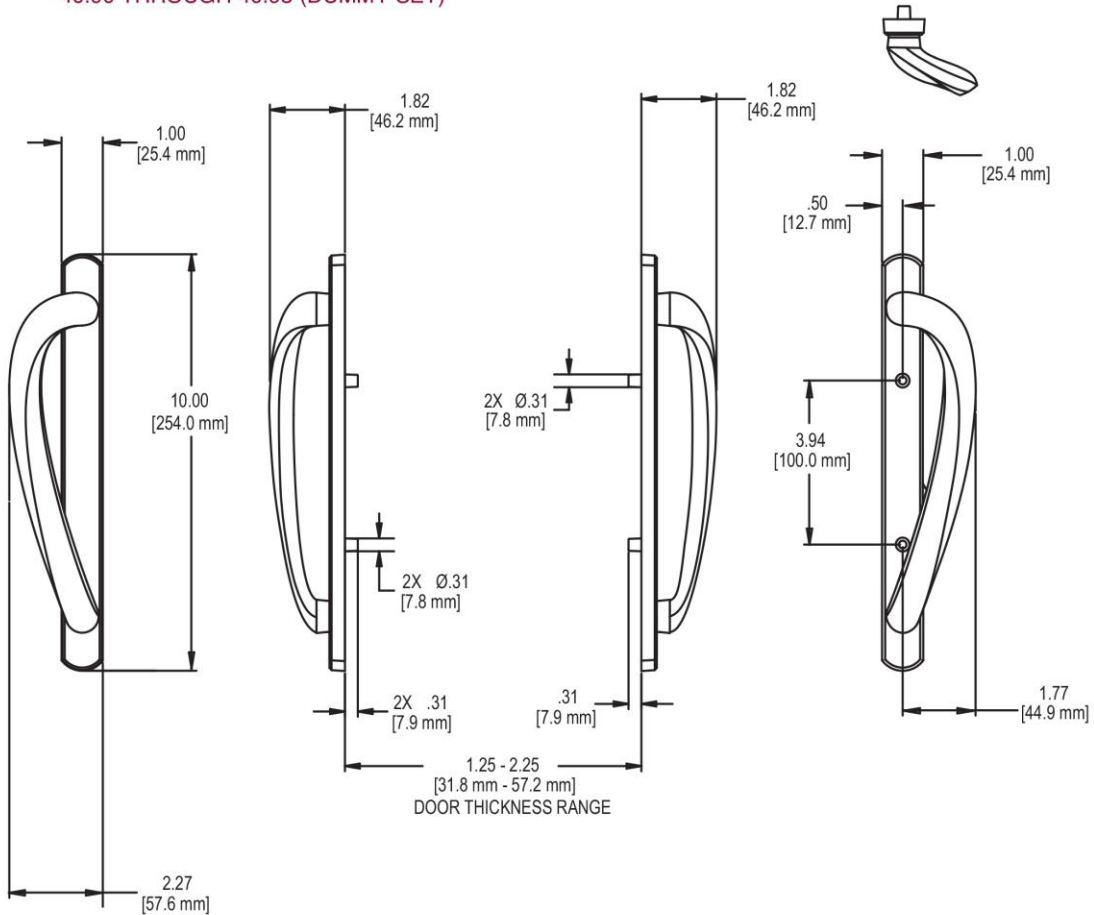
MOUNTING SCREWS:

2X #8-32 PHILLIPS OVAL HEAD MACHINE
SCREWS (1.75, 2.125, AND 2.50
LENGTH SCREWS ARE PROVIDED IN THE
KIT TO FIT STILE THICKNESSES RANGING
FROM 1.25 TO 2.25).



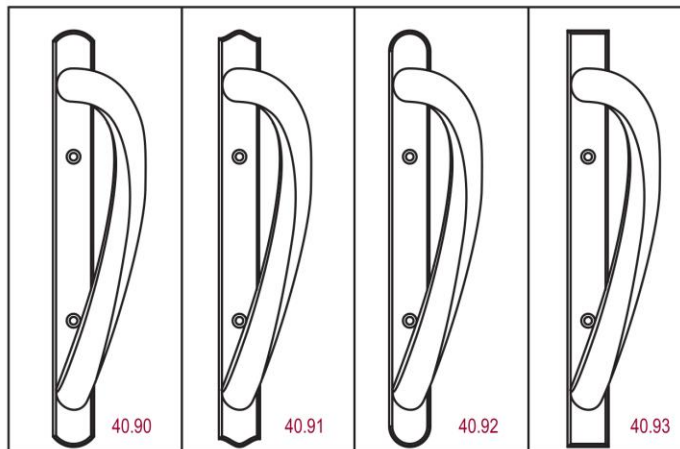
SIGNATURE SERIES PATIO DOOR HANDLE SETS

FIG. 7 SIGNATURE SERIES PATIO DOOR HANDLES
40.90 THROUGH 40.93 (DUMMY SET)

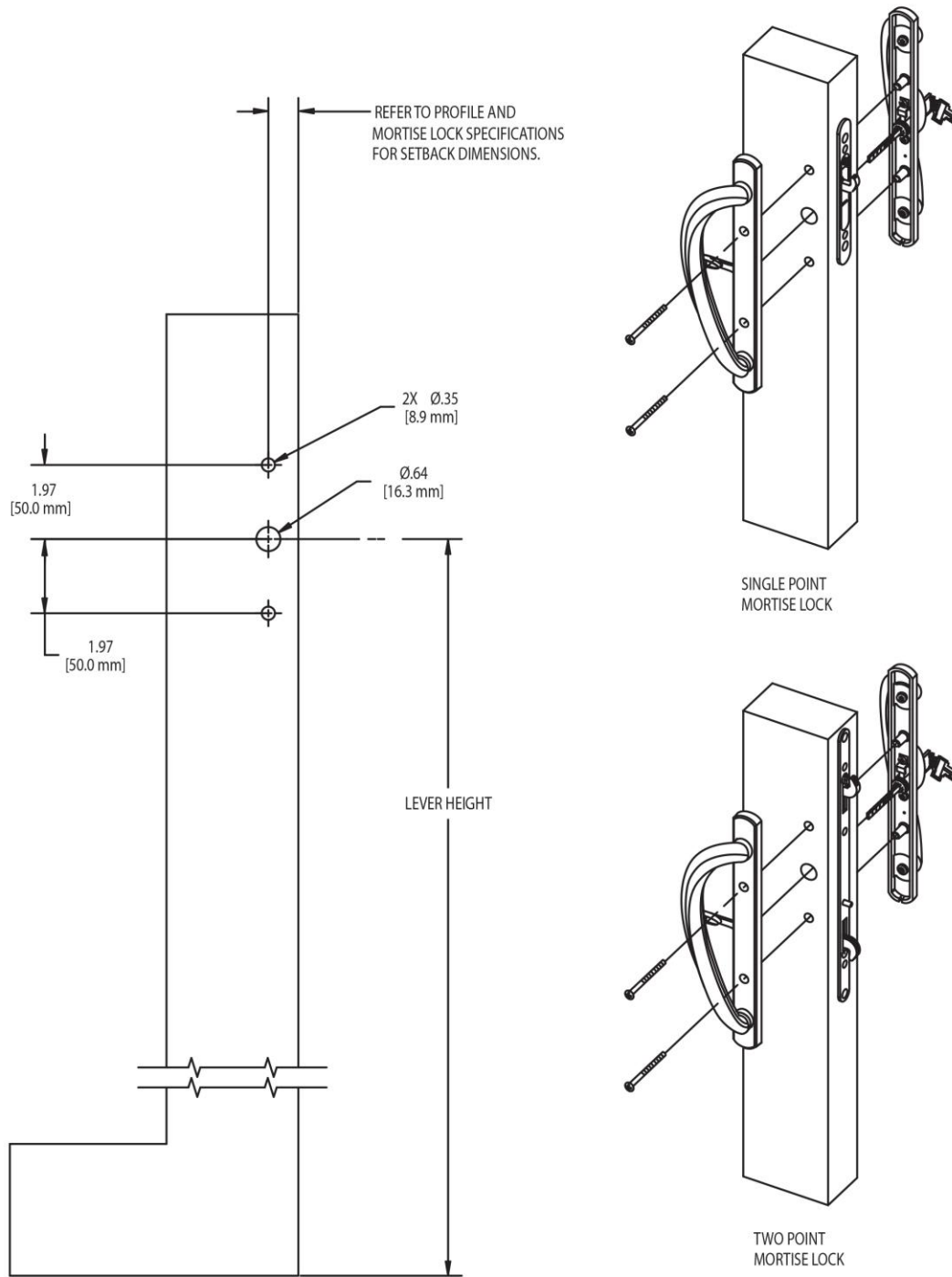


MOUNTING SCREWS:

2X #8-32 PHILLIPS OVAL HEAD MACHINE
SCREWS (1.75, 2.125, AND 2.50
LENGTH SCREWS ARE PROVIDED IN THE
KIT TO FIT STILE THICKNESSES RANGING
FROM 1.25 TO 2.25).

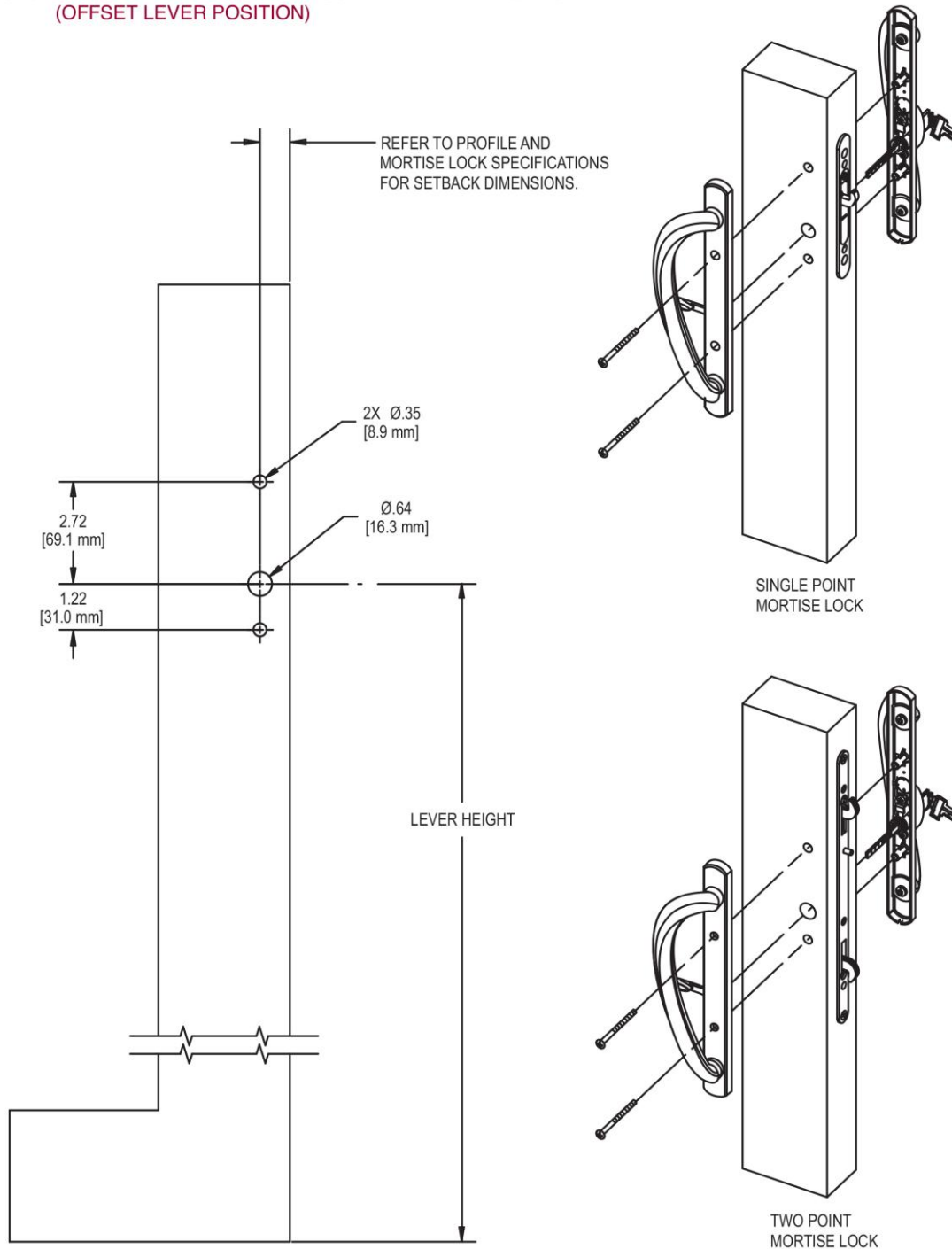


**FIG. 8 SIGNATURE SERIES PATIO DOOR HANDLE APPLICATION
(CENTERED LEVER POSITION)**



SIGNATURE SERIES PATIO DOOR HANDLE SETS

FIG. 9 SIGNATURE SERIES PATIO DOOR HANDLE APPLICATION
(OFFSET LEVER POSITION)



**FIG. 10 SIGNATURE SERIES PATIO DOOR HANDLE APPLICATION
(DUMMY APPLICATION)**

