



Modeled after Truth's popular 9400 and EntryGard Series sash locks, the 17.04 Series Lock is an excellent option for either single or double-hung style windows. Designed with a slightly different mounting hole pattern than its predecessors, the 17.04 is designed easily adaptable to most window profiles in the market today.

- Concealed locking mechanisms help protect moving parts from dust and dirt for added lock life while producing a better seal of the sash at the head and sill.
- The internal cam eliminates unsightly paint abrasions caused by the interaction of cam and keeper.
- These locks are available with or without alignment lugs. These lugs have been designed to help prevent shifting of the rails during locking for an enhanced window seal. Tapered "nesting" lugs, which help guide the lock to the keeper are also an option.

WARRANTY: Protected under the terms of the "Truth Warranty for Window & Door Manufacturers & Authorized Distributors". Refer to Truth's Terms & Conditions for further details.

LOGO OPTIONS: For that "personalized touch", Truth's 17.04 Series Sash Locks are capable of accepting your company's name or logo. Truth's logo reproduction processes is an attractive way of highlighting your company signature.

MATERIAL: High-pressure, corrosion resistant, die-cast zinc.

FINISH: Electrostatically applied, durable coatings that provide excellent resistance to chipping, scratching and corrosion while maintaining color stability for years in direct sunlight. Please refer to Truth's Color Chart for examples of Truth's most popular finish options. Truth also offers a wide range of decorative "plated" finishes – contact Truth for additional information on availability of these finishes on specific product lines.

ORDERING INFORMATION:

1. Order a 17.04 Series Lock.
2. Order the 17.04 Series style of "keeper" desired (specify by part number).
3. Specify finish choice.



RECOMMENDED SCREWS:

Types of screws required determined by material of profile used (sold separately). For additional information on screw selection – see Truth Tips.

TRUTH TIPS:

1. A lock with pick-resistant alignment lugs should be used whenever possible. A lock without lugs should be chosen when the lugs cause interference with divided light grills or other window features.
2. When two locks are used on one window, the placement of each lock, with respect to its keeper, becomes very critical to maintain a constant weatherseal on all sides of the window and to insure that each lock engages properly with its keeper.
3. For accurate hardware placement in vinyl or metal applications, pre-drilling of the window profile is recommended.
4. For vinyl window applications, mounting screws should pass through two PVC walls, or one PVC wall and one insert wall. For this reason, it may be necessary to use a longer screw than is recommended.
5. For metal window profiles, Truth recommends stainless steel machine screws. However, in most applications, stainless steel sheet metal screws will provide adequate holding power.

INCLUDE TRUTH SPECS IN YOUR NEXT WINDOW PROJECT

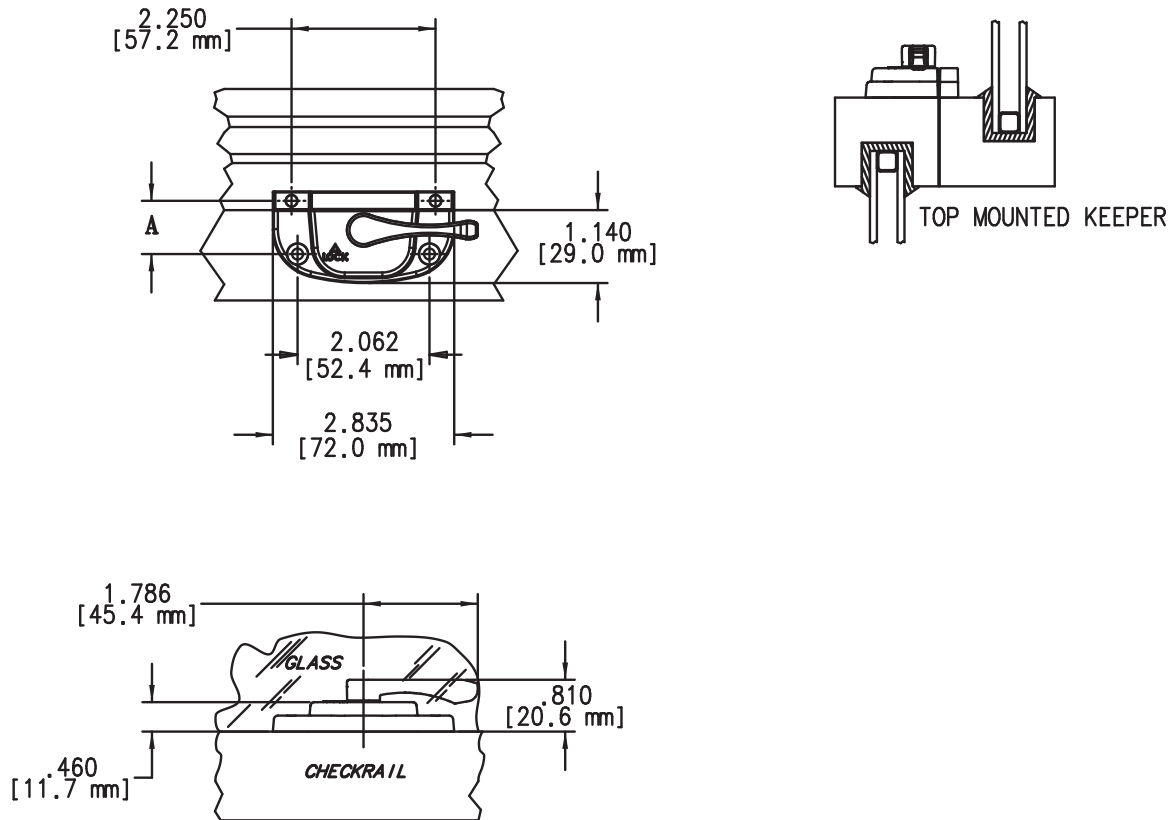
Window check rail locks shall be included which will increase both security and weather seal tightness. The lock must provide easy operation and positive locked feel.

Window check rail locks will be of internal cam design to provide optimum sealing of the meeting rails. The lock and accompanying keeper will prevent misalignment during locking. The lock and keeper shall be constructed of high pressure zinc alloy die castings.

Window locks shall be 17.04 Series Sash Locks as manufactured by Truth Hardware.

17.04 SASH LOCK

FIG. 1 APPLICATION OF TRUTH 17.04



PRODUCT NUMBER	SCREW HOLE SETBACK	WITH NESTING NIBS	WITHOUT NESTING NIBS
17.04.XX.100	.687"		X
17.04.XX.110	.687"		X
17.04.XX.200	.687"	X	
17.04.XX.203	.437"	X	
17.04.XX.204	.437"		X

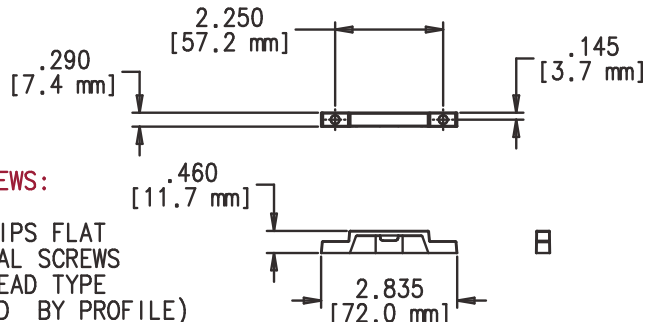
RECOMMENDED SCREWS:

WOOD: (QTY 2) (P/N 19100) #7 X .750 PHILLIPS, FLAT HEAD, SHEET METAL SCREWS.

PVC/METAL: (QTY 2) #7 PHILLIPS, FLAT HEAD SCREWS (LENGTH AND THREAD TYPE TO BE DETERMINED BY PROFILE)

17.04 SASH LOCK

FIG. 2 41510 KEEPER

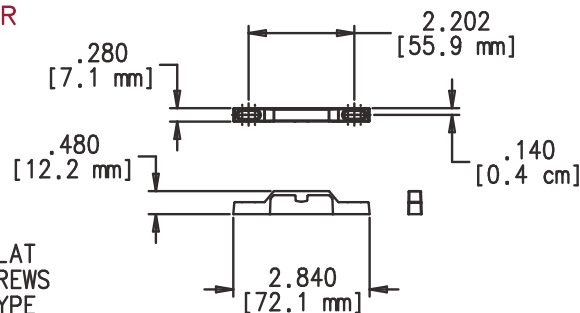


RECOMMENDED SCREWS:

(QTY 4)#6 PHILLIPS FLAT HEAD, SHEET METAL SCREWS (LENGTH AND THREAD TYPE TO BE DETERMINED BY PROFILE)

AVAILABLE LOCKS	A
17.04.XX.100	.832 (21.1mm)
17.04.XX.110	.832 (21.1mm)
17.04.XX.204	.582 (14.8mm)

FIG. 3 C09336 KEEPER

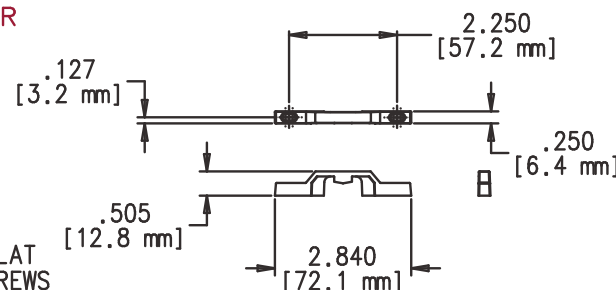


RECOMMENDED SCREWS:

(QTY 4)#6 PHILLIPS FLAT HEAD, SHEET METAL SCREWS (LENGTH AND THREAD TYPE TO BE DETERMINED BY PROFILE)

AVAILABLE LOCKS	A
17.04.XX.100	.827 (21.0mm)
17.04.XX.110	.827 (21.0mm)
17.04.XX.200	.827 (21.0mm)
17.04.XX.203	.577 (14.7mm)
17.04.XX.204	.577 (14.7mm)

FIG. 4 C09417 KEEPER

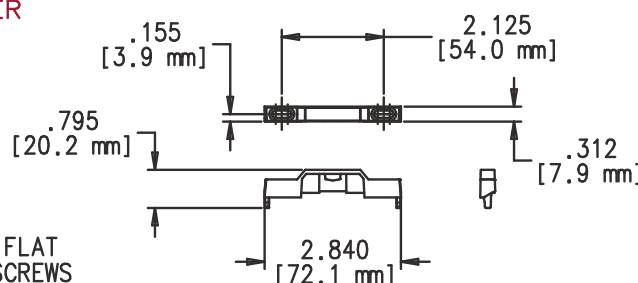


RECOMMENDED SCREWS:

(QTY 4)#4 PHILLIPS FLAT HEAD, SHEET METAL SCREWS (LENGTH AND THREAD TYPE TO BE DETERMINED BY PROFILE)

AVAILABLE LOCKS	A
17.04.XX.100	.814 (20.7mm)
17.04.XX.110	.814 (20.7mm)
17.04.XX.200	.814 (20.7mm)
17.04.XX.203	.561 (14.2mm)
17.04.XX.204	.561 (14.2mm)

FIG. 5 41807 KEEPER

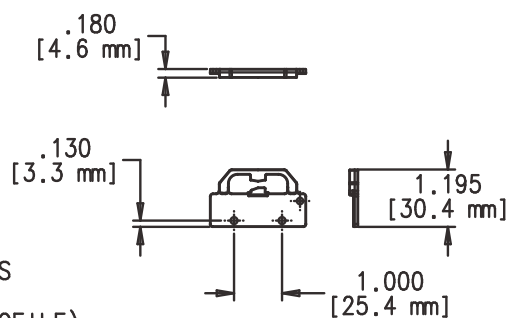


RECOMMENDED SCREWS:

(QTY 4)#6 PHILLIPS FLAT HEAD, SHEET METAL SCREWS (LENGTH AND THREAD TYPE TO BE DETERMINED BY PROFILE)

AVAILABLE LOCKS	A
17.04.XX.100	.842 (21.4mm)
17.04.XX.110	.842 (21.4mm)
17.04.XX.200	.842 (21.4mm)
17.04.XX.203	.592 (15.0mm)
17.04.XX.204	.592 (15.0mm)

FIG. 6 C09213 KEEPER



RECOMMENDED SCREWS:

(QTY 4)#6 PHILLIPS FLAT HEAD, SHEET METAL SCREWS (LENGTH AND THREAD TYPE TO BE DETERMINED BY PROFILE)

AVAILABLE LOCKS	A
17.04.XX.100	.832 (21.1mm)
17.04.XX.110	.832 (21.1mm)
17.04.XX.200	.832 (21.1mm)
17.04.XX.203	.582 (14.8mm)
17.04.XX.204	.582 (14.8mm)

