



One of the most popular low profile locks on today's market:

- Streamlined low profile handle folds snugly against the housing producing a clean appearance, and helps to eliminate interference in shipping.
- One-piece box construction spring provides a strong detent in handle movement, thus assuring the homeowner that the handle has completed its travel.
- Three versions of latches are available (blade; snug fit latch; and hook latch - each of which have different "throw" and "height" dimensions (see drawings).
- 7538 latches are designed to be compatible with specific keepers that will help produce the optimum engagement between lock and keeper.

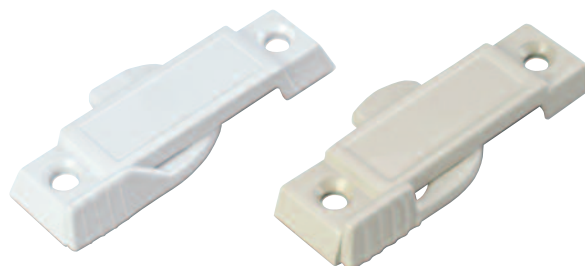
LOGO OPTIONS: For that "personalized touch", Truth's 7538 Series Sash Locks are capable of accepting your company's name or logo. Truth's logo process is an attractive way of highlighting your company signature. For further details on where your company's logo would appear, please refer to the following drawings.

WARRANTY:

Protected under the terms of the "Truth Warranty for Window & Door Manufacturers & Authorized Distributors". Refer to Truth's Terms & Conditions for further details.

MATERIAL: High-pressure, corrosion-resistant, die-cast zinc.

FINISH: Electrostatically applied, durable coatings that provide excellent resistance to chipping, scratching and corrosion while maintaining color stability for years in direct sunlight. Please refer to Truth's Color Chart for examples of Truth's most popular finish options. Truth also offers a wide range of decorative "plated" finishes - contact Truth for additional information on availability of these finishes on specific product lines.



ORDERING INFORMATION:

1. Choose the 7538 Series Lock that best meets your requirements (specify by item number found in Fig. 2-6).
2. Order the keeper style required.
3. Specify finish code (denoted where "xx" appears in the following drawings).

RECOMMENDED SCREWS:

Length and type of screw required determined by profile material used (sold separately). For additional information on screw selection - see Truth Tips.

TRUTH TIPS:

1. A lock with a shorter throw should be used when the larger sweep radius of the .125" (3.2 mm) pull-in causes interference with the glazing or other areas of the profile.
2. When two locks are used on one window, the placement of each lock, with respect to its keeper, becomes very critical to maintain a constant weatherseal on all sides of the window and to insure that each lock engages properly with its keeper.
3. For accurate hardware placement in vinyl or metal applications, pre-drilling of the window profile is recommended.
4. For vinyl window applications, mounting screws should pass through two PVC walls, or one PVC wall and one insert wall. For this reason, it may be necessary to use a longer screw.
5. For metal window profiles, Truth recommends stainless steel machine screws. However, in most applications, stainless steel sheet metal screws will provide adequate holding power.

INCLUDE TRUTH SPECS ON YOUR NEXT WINDOW PROJECT

Window check rail locks shall be included which will increase both security and weather seal tightness. The lock must provide easy operation and positive locked feel.

The lock and keeper shall be constructed of high pressure zinc alloy die castings.

Window locks shall be 7538 Series as manufactured by Truth Hardware.

FIG. 1 APPLICATION OF 7538 SERIES SASH LOCK AND KEEPER

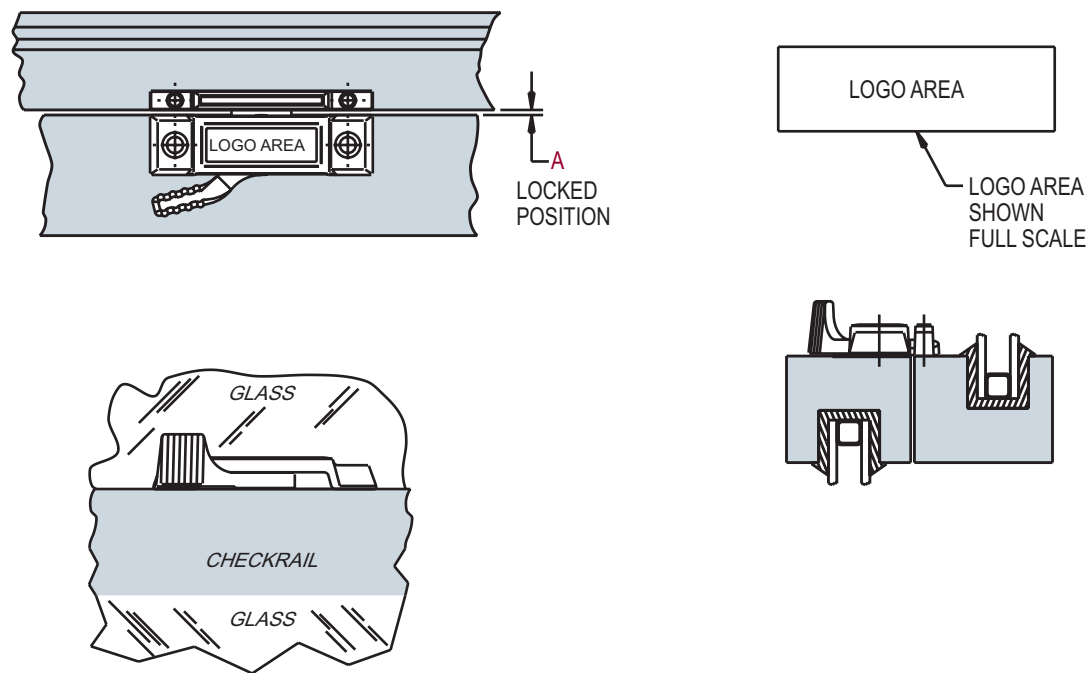
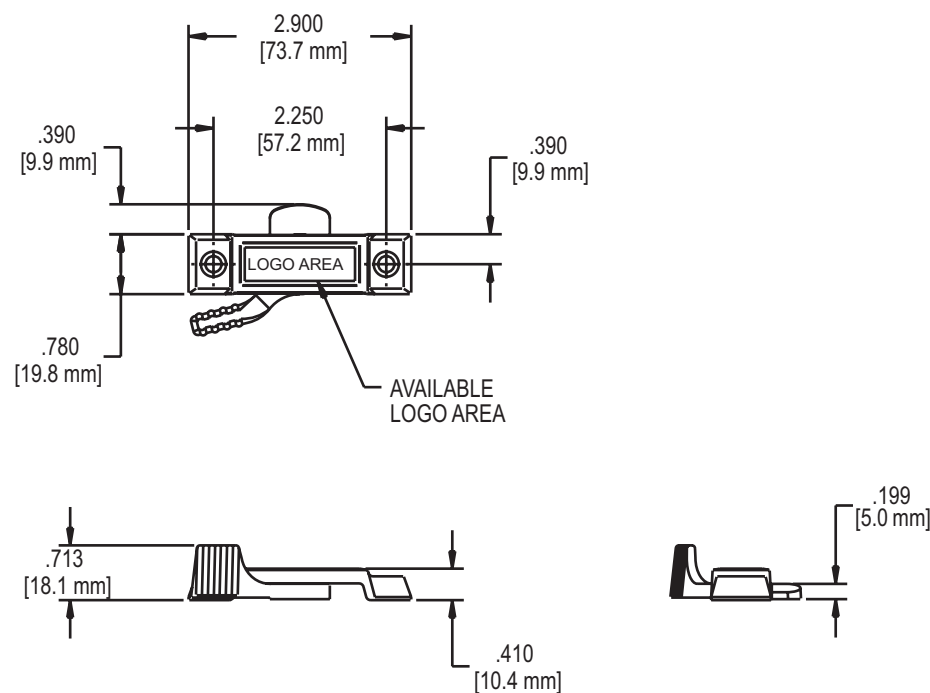


FIG. 2 A07538120XX SASH LOCK

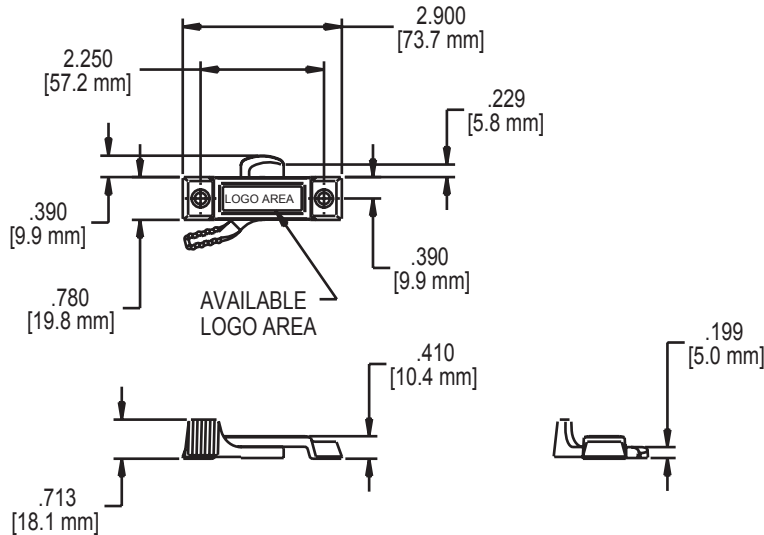


RECOMMENDED SCREWS:

(QTY 2) #8 PHILLIPS FLAT HEAD SCREWS
(LENGTH AND THREAD TYPE TO BE DETERMINED
BY PROFILE)

| AVAILABLE KEEPERS | DIM A |
|----------------------|--------------|
| C07545 | .060 (1.5mm) |
| C08848 | |

FIG. 3 A07538124XX SASH LOCK

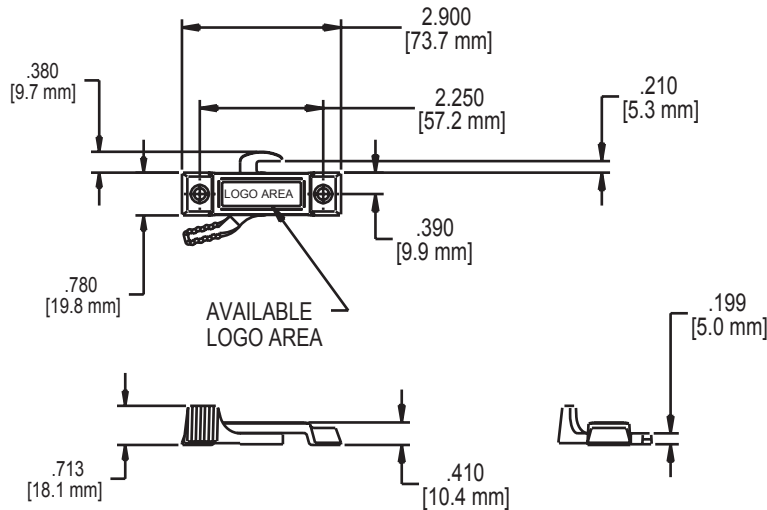


| AVAILABLE KEEPERS | DIM A |
|-------------------|--------------|
| C08245 | .060 (1.5mm) |
| C08849 | |
| C08452 | |

RECOMMENDED SCREWS:

(QTY 2) #8 PHILLIPS SLAT HEAD SCREWS (LENGTH AND THREAD TYPE TO BE DETERMINED BY PROFILE)

FIG. 4 A07538144XX SASH LOCK

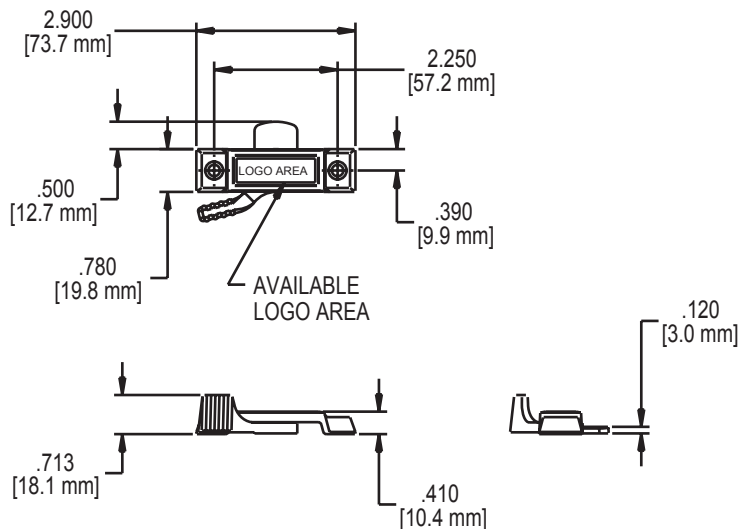


| AVAILABLE KEEPERS | DIM A |
|-------------------|--------------|
| C08845 | .060 (1.5mm) |
| C09092 | |

RECOMMENDED SCREWS:

(QTY 2) #8 PHILLIPS SLAT HEAD SCREWS (LENGTH AND THREAD TYPE TO BE DETERMINED BY PROFILE)

FIG. 5 A07538231XX SASH LOCK

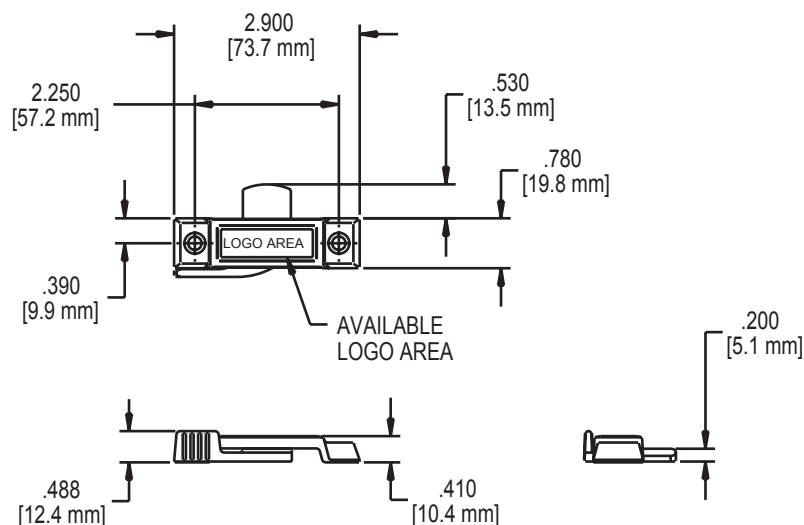


| AVAILABLE KEEPERS | DIM A |
|-------------------|--------------|
| C07545 | .060 (1.5mm) |
| C08848 | |

RECOMMENDED SCREWS:

(QTY 2) #8 PHILLIPS SLAT HEAD SCREWS (LENGTH AND THREAD TYPE TO BE DETERMINED BY PROFILE)

FIG. 6 A07538186XX SASH LOCK

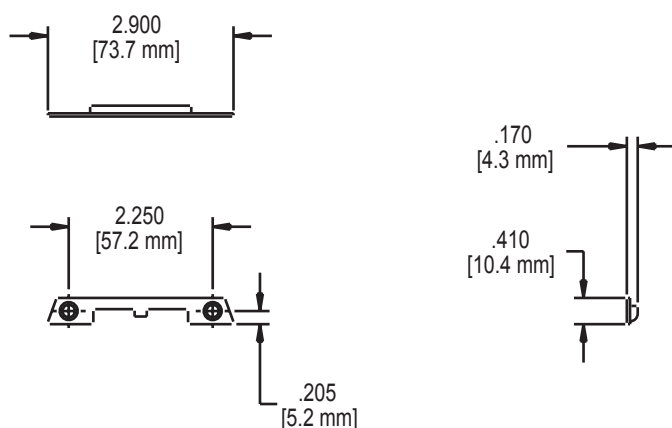


| AVAILABLE KEEPERS | DIM A |
|-------------------|--------------|
| C07545 | .060 (1.5mm) |
| C08848 | |

RECOMMENDED SCREWS:

(QTY 2) #8 PHILLIPS FLAT HEAD SCREWS (LENGTH AND THREAD TYPE TO BE DETERMINED BY PROFILE)

FIG. 7 CO8452XX KEEPER

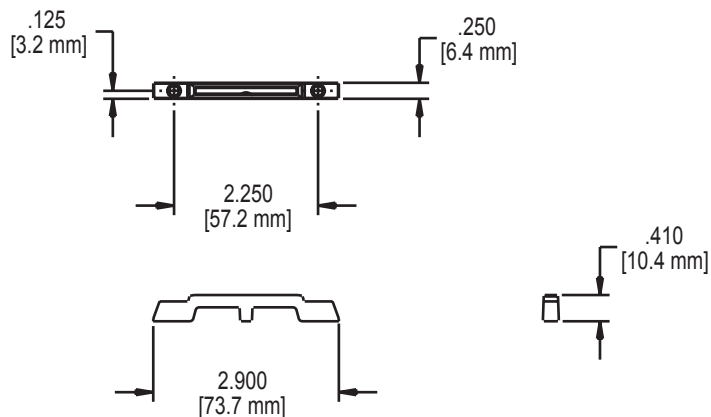


| AVAILABLE LOCKS | DIM A |
|-----------------|--------------|
| A07538124 | .060 (1.5mm) |

RECOMMENDED SCREWS:

(QTY 2) #6 PHILLIPS FLAT HEAD SCREWS (LENGTH AND THREAD TYPE TO BE DETERMINED BY PROFILE)

FIG. 8 CO9092XX KEEPER



| AVAILABLE LOCKS | DIM A |
|-----------------|--------------|
| A07538124 | .060 (1.5mm) |

RECOMMENDED SCREWS:

(QTY 2) #4 PHILLIPS FLAT HEAD SCREWS (LENGTH AND THREAD TYPE TO BE DETERMINED BY PROFILE)