



Design File

Trilennium™ 3000 Series Three Point Lock System

Trilennium™ Features

Highest Security Available

- Impact Performance Exceeds ASTM F476 Grade 40.
- Design Pressure Tested to Exceed D.P. 95.
- 3 Points Latch & Deadbolt (1" throw).
- Hardened Steel Pins in each Deadbolt.
- Strike Reinforcing Plates.

User Friendly

- Intuitive North American Function.
- Panic Actuation Releases all Bolts During Single Downward Lever Rotation.
- 90° Thumbturn Rotation Provides Visual Locked/Unlocked Indication.
- Rollers Reduce Operating Forces.
- 3/16" Pull-in at Top & Bottom Bolts During Deadbolting Ensures Weatherseal.
- 3/8" Vertical Clearance in Strikes.
- Flush Faceplate with no Connectors projecting into the reveal.
- Large Fabrication & Installation Tolerances.

System Construction

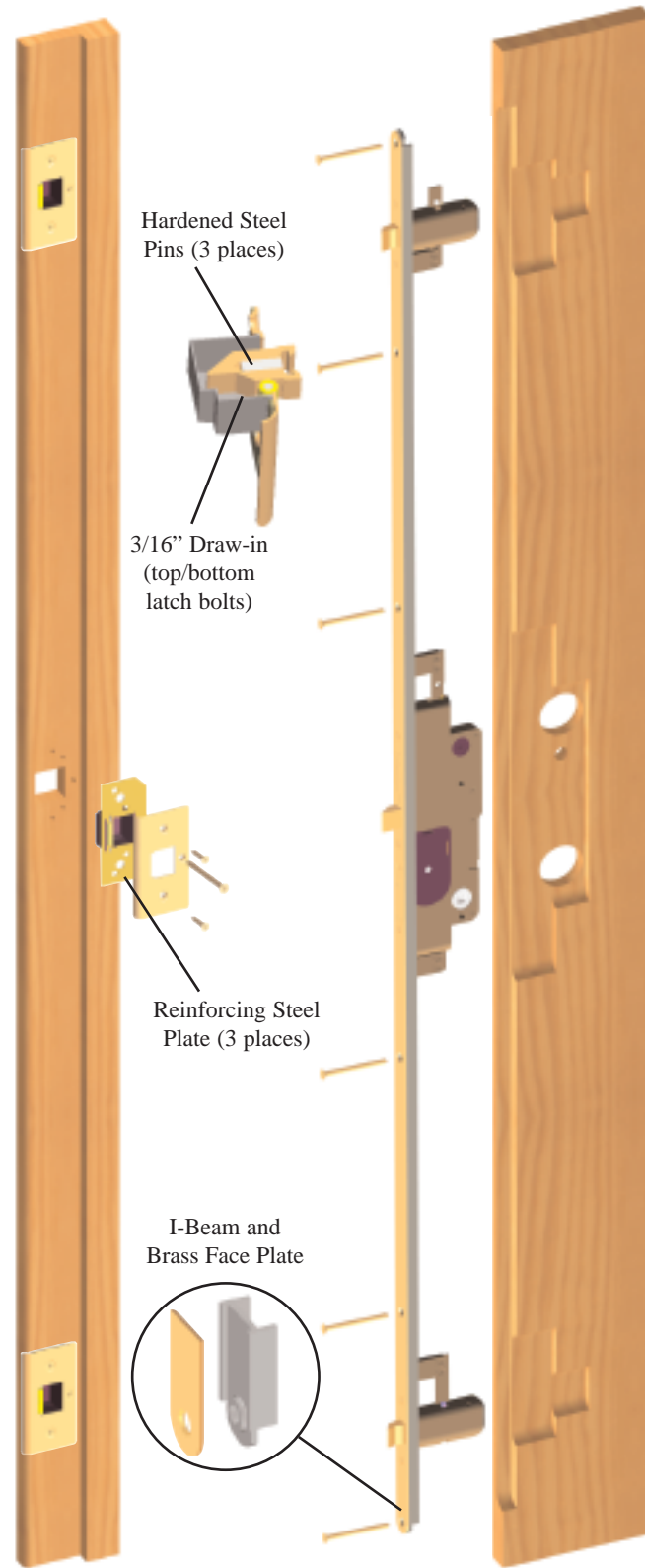
- I-Beam System Carrier Strengthens Door.
- Lock Face Plate Available in 11 Finishes.
- Matching Strike Plates Available in 11 Finishes.
- Solid Brass Bolts with a Low Friction Wear Face.
- Powder Painted Metal Lock Housings.
- Roller Components for Longer Life & Reduced Operating Forces.
- Molded Strike Dust Boxes.

Fabrication

- Standard Crossbores.
- Simple Router Fabrication or
- Automatic Equipment Fabrication.

Application

- 1 Piece Lock Module with Mounting Screws.
- Non-Handed Trim with either Weiser Keyway or Schlage "C" Keyway.
- 1 3/4" or 2 1/4" Stile Thickness Standard, others Available.
- Shoot Bolt System Available for Double Door Applications.



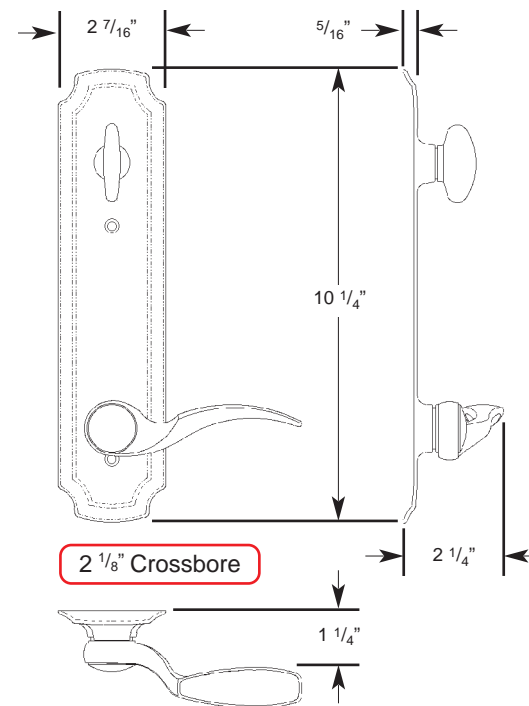
Jamb

Active Stile Section

Copyright © 06/2009

Eclipse

1200-125-XXXX



Example: 1200-125-XXXX
Fill in Dash # From Below

Available Finishes		Active	Dummy
US#3	Bright Brass	-1000	-1008
US#5	Antique Brass	-1001	-1009
US#15	Satin Nickel	-1056	-1058
US#15A	Antique Nickel	-1050	-1052
US#26	Bright Chrome	-1062	-1064
US#26D	Satin Chrome	-1002	-1010
WF#5	Black Powder Paint	-1086	-1088
WF#10P	Victorian Bronze	-1083	-1085
WF#46	White Powder Paint	-1059	-1061

(1200-125 Series ONLY)			
3PVD	Bright Brass PVD	-1012	-1014
15PVD	Satin Nickel PVD	-1018	-1020

(1200-128 Series ONLY)			
3PVD	"Lifetime" Solid Brass	-1001	-1005

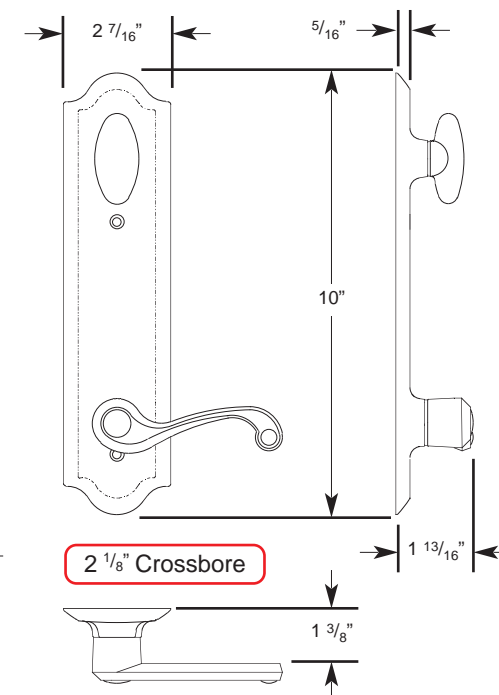
When ordering, please specify:

- Handle set style from above.
- Stile thickness (1 3/4" standard).
- Handing: LH, RH, LH Rev, RH Rev.



Pinnacle

1200-135-XXXX

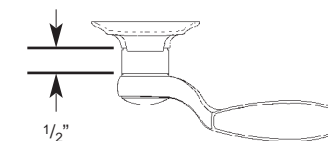


Ask for the catalogs for
W & F's other handle set options:

Exclusive Rocky Mountain Hardware
Solid Bronze:
Entrance Grip & Lever Sets
5 Escutcheon Styles
(up to 21")
Over 40 Lever Options
9 Different Patinas

Emtek Products:
Stainless Steel, Solid Brass,
and Solid Bronze Lever
Set options.

W & F Lever Spacer



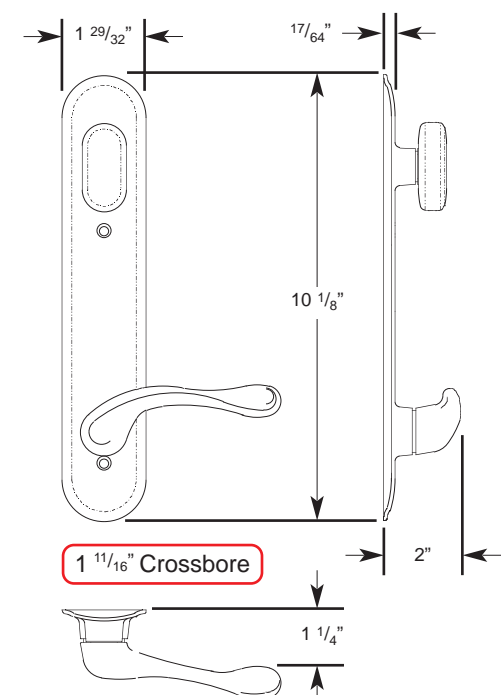
The 1200-116 Lever Spacer Kit can be
used to extend Eclipse, Pinnacle, Horizon
or Europa levers. A maximum of two
spacers can be used for a 1" extension.



Note: You can use the opposite hand and reverse the panic feature on the
Trilennium mortise lock for an outswing door. (for RH Rev., use Left Hand)

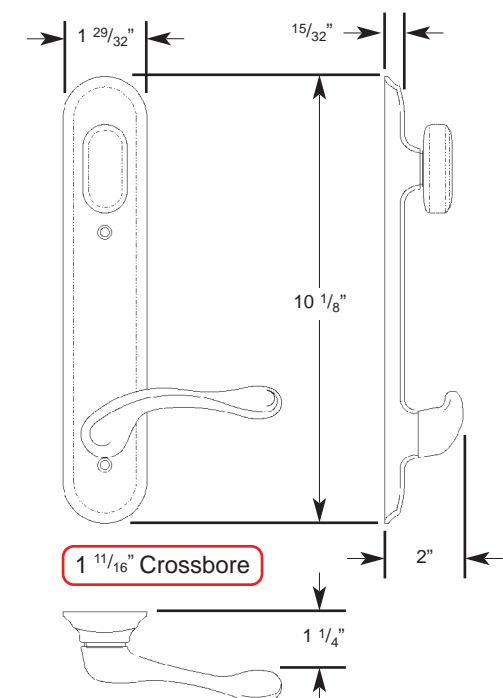
Horizon

1200-128-XXXX



Europa

1200-130-XXXX (Solid Brass)



W & F Manufacturing, Inc.

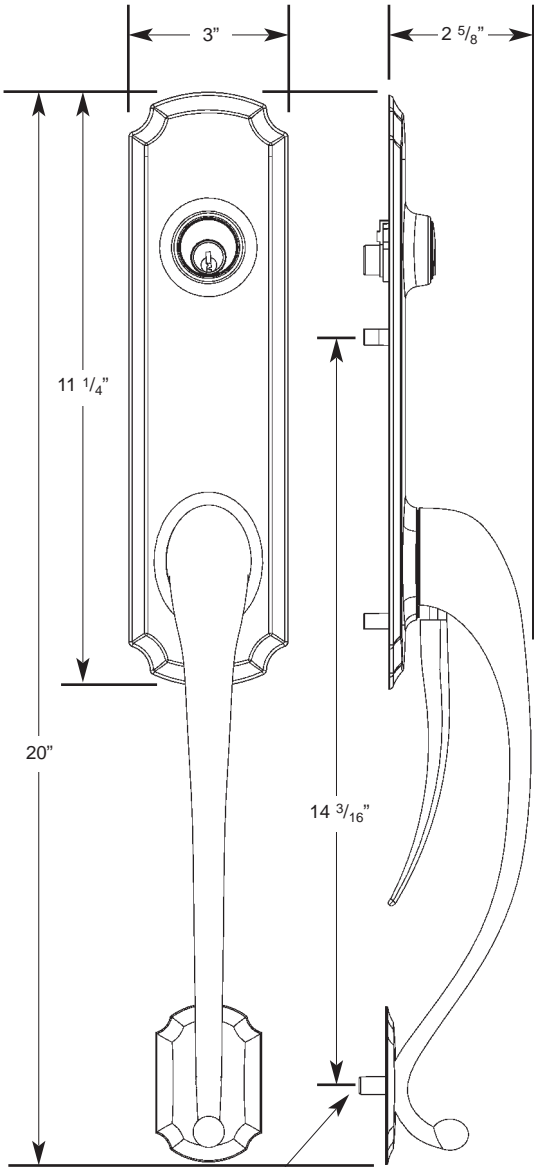
P.O. Box 30 Glendale, CA 91209 Ph: 818/394-6060 fax: 818-394-6050
web: www.wfmfg.com eMail: sales@wfmfg.com

TEMPLATE SYSTEMS
 FOR ROUTER
 FABRICATION



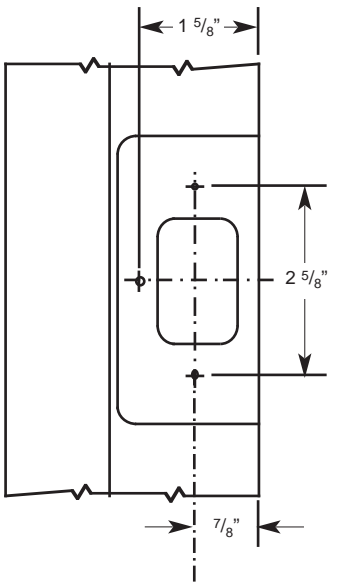
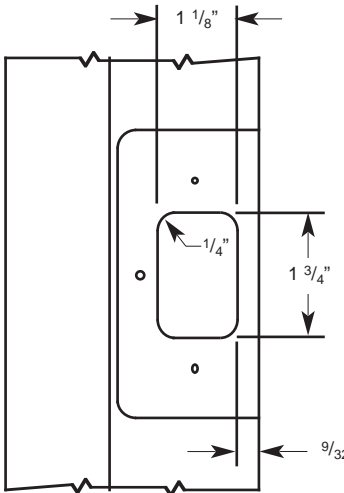
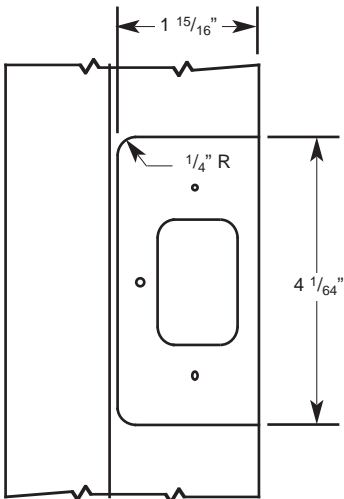
Ask for W & F's complete tooling solutions for easy stile and jamb fabrication.

Eclipse Entrance Grip
 1500-125-XXXX



Note: Drill 3/8" Dia. hole for bottom of entrance grip mounting screw.

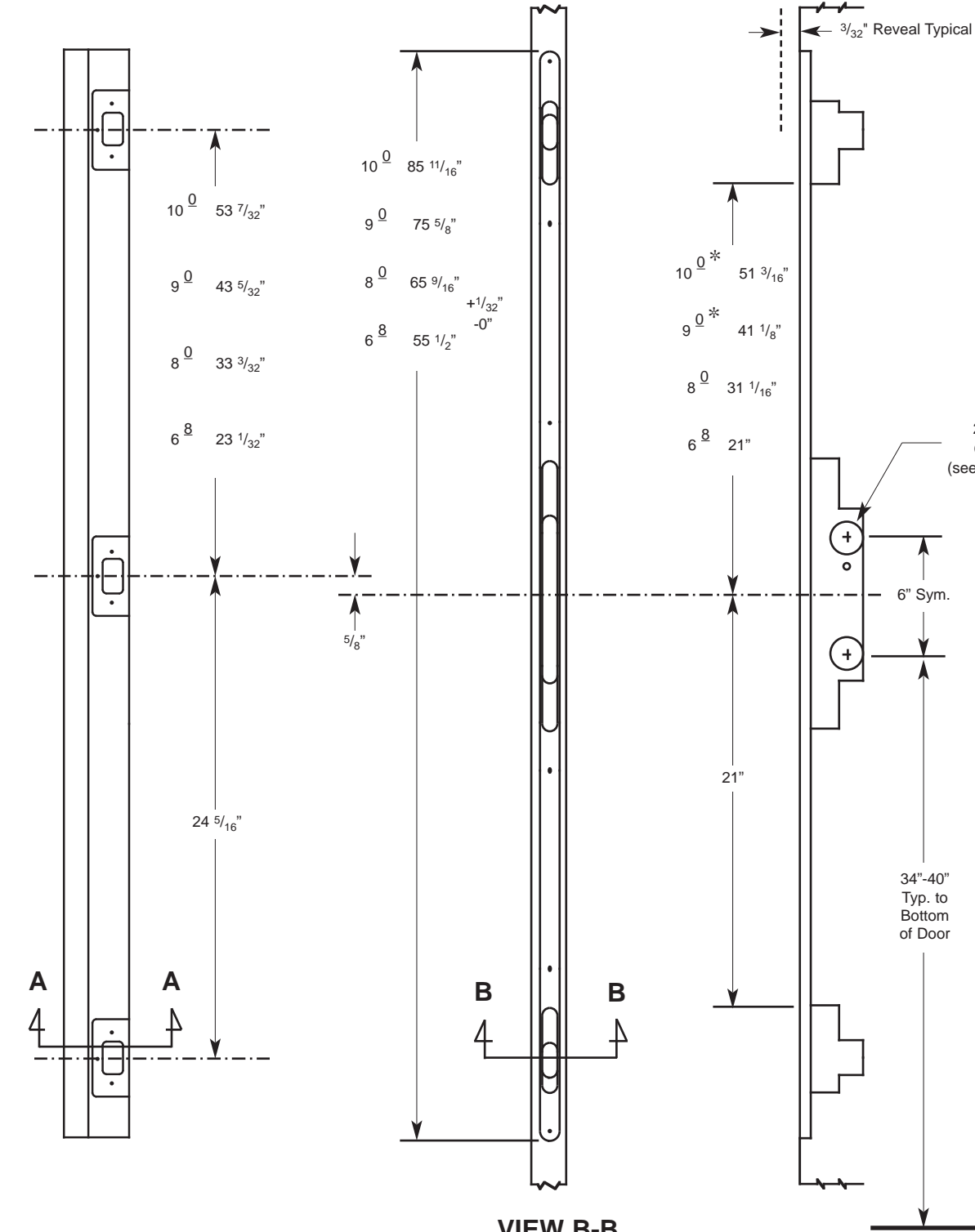
JAMB DETAILS



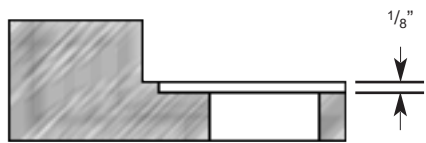
Note: C/L of strike mounting screws to match C/L of Lock.

All dimensions shown are for a 1 3/4" door.
 Shift accordingly for 2 1/4" or other door thickness.

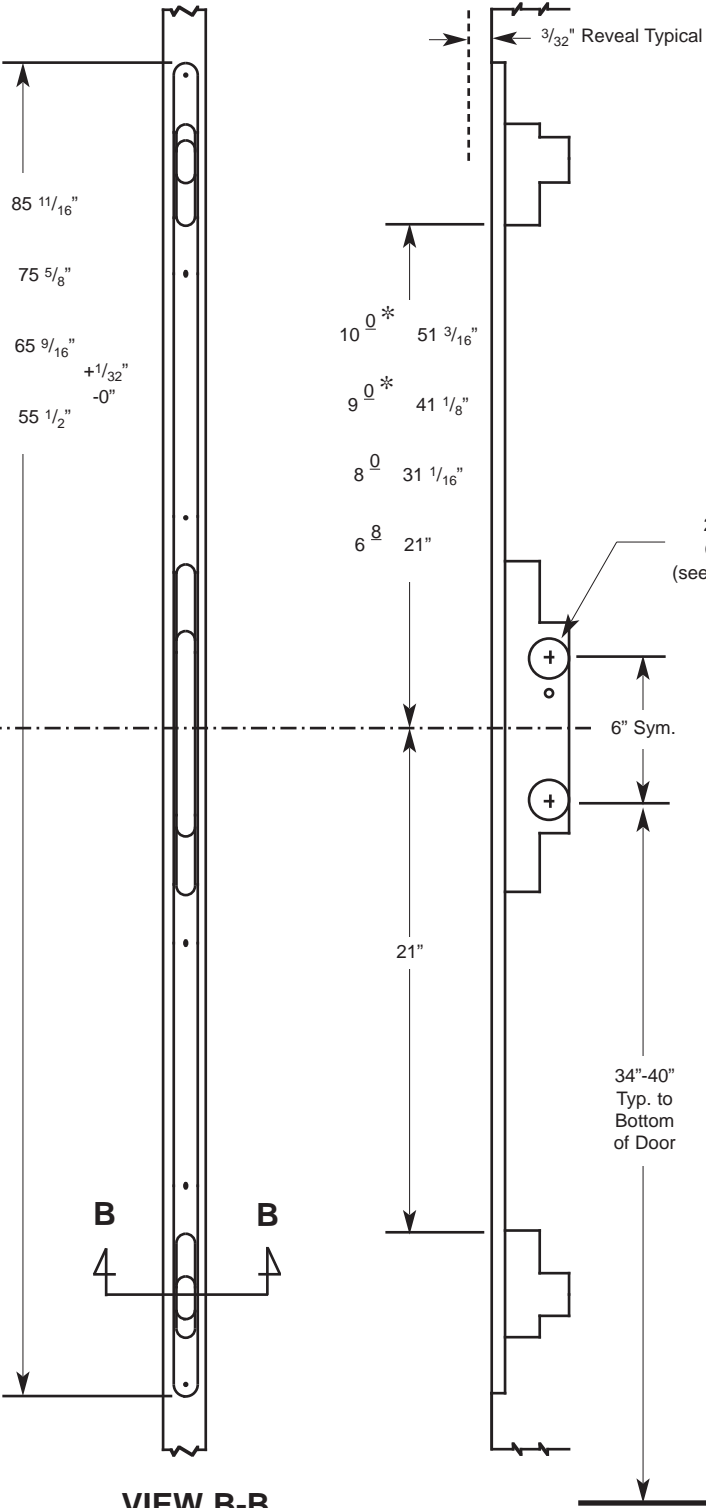
JAMB FABRICATION



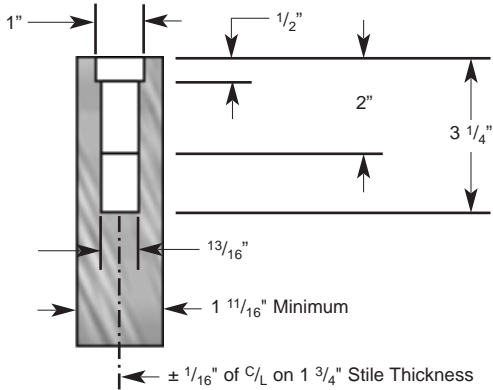
VIEW A-A
 NOT TO SCALE



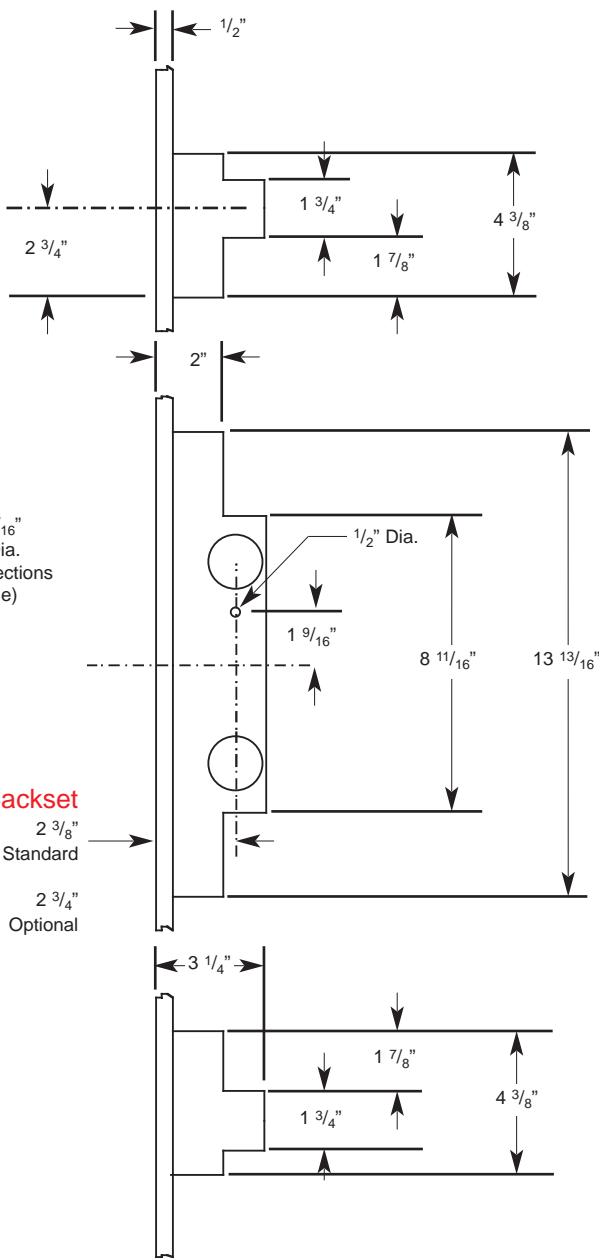
STILE FABRICATION



VIEW B-B
 NOT TO SCALE



STILE DETAILS



Note:
 2 1/8" or 1 11/16"
 Crossbore Dia.
 (see Handle selections
 on back page)

Backset
 2 3/8"
 Standard
 2 3/4"
 Optional

Standard Heights
 6 8 and 8 0 : 3000-1-XXXX
 9 0 : 3000-2-XXXX
 10 0 : 3000-3-XXXX
 Fill in Dash # From Below

Standard Finishes

US#3	Bright Brass
US#5	Antique Brass
US#15	Satin Nickel
US#15A	Antique Nickel
US#26	Bright Chrome
US#26D	Satin Chrome
US#32D	Stainless Steel
WF#5	Black Powder Paint
WF#10P	Victorian Bronze
WF#46	White Powder Paint
10P/SS	Vict. Bronze / SS

6 8 9 0 and 10 0		8 0	
Right	Left	Right	Left
-1000	-1001	-1010	-1011
-1022	-1023	-1032	-1033
-1020	-1021	-1030	-1031
-1004	-1005	-1014	-1015
-1024	-1025	-1034	-1035
-1008	-1009	-1018	-1019
-1060	-1061	-1070	-1071
-1040	-1041	-1050	-1051
-1048	-1049	-1058	-1059
-1002	-1003	-1012	-1013
-1062	-1063	-1072	-1073